

## CHAPTER 7- CANINE ETHNOLOGY

Dog (*Canis lupus familiaris* ;  $2n= 78$  Chromosomes)

### 1. ORIGIN, DOMESTICATION AND EVOLUTION

- **ORIGINE AND EVOLUTION**

Many peoples of the Far North consider the wolf to be the ancestor of their dogs. The Tlingit (Native Americans of North America) tell that their ancestors took wolf pups from their den to train them as hunting aides alongside humans (Thornton Emmons 1991). Charles Darwin thought that several wild species of canids must have been tamed, that they had interbred, and that modern dogs descend from these hybrids (Darwin 1859). Today this mystery is resolved. In 1997, Robert Wayne's team at the University of California published a study on the mitochondrial DNA of modern dogs and wolves (Vila et al. 1997). This study clearly showed that all dogs descend from the wolf. A more recent study, on nuclear DNA, revealed that the dog does not descend from the modern wolf but from a population of extinct wolves that lived during the Pleistocene (Freedman et al. 2014).

- **DOMESTICATION**

Although the ancestor of the dog is now known, many questions remain, such as when, where, how, and why the wolf was domesticated. One thing is certain: the dog is the oldest domesticated animal. When and where the wolf was domesticated, it is possible to give an estimate of the time of domestication, but to say exactly where this domestication took place, there are several controversies. The majority of scientists from Belgium, Canada, Finland, France, Germany, Portugal, Russia, and the United States have stated that domestication took place in Europe, but the time of domestication was not defined. Some scientists from China, Sweden, and the United States have also stated that domestication occurred in Southeast Asia. Overall, there is still no definitive answer on the place and time of domestication (Haddam, 2022).

### 2. CLASSIFICATIONS

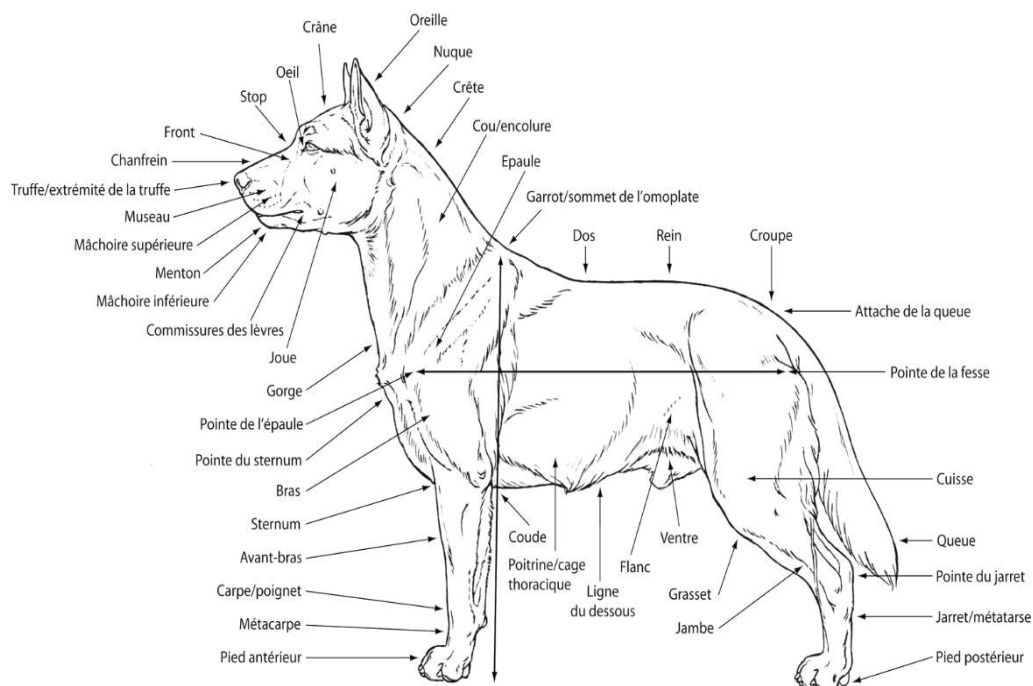
The table1 shows the classification of dogs into the animal's world.

Tableau1 : Classification of dogs into the animal world (Linnaeus, 1785 ; Villemin, 1984 ; Haddam, 2022)

<b>Classification according to the MSW</b>	
Kingdom	Animalia
Phylum	Chordata
Class	Mammalia
Order	Carnivora
Sub-order	Caniformia
Family	Canidae
Genus	Canis
Species	<i>Canis lupus</i>
Sub--species	<i>Canis lupus familiaris</i>
<b><u>Biological Parameters</u></b>	
2n=78 chromosomes	
Rectale Température RT : 38,5-39 <sup>0</sup> c	
Heart Ratce HR : Puppy (Juvenile dog) : 110-120= Beats/Mn ; adult : 80-100=Beats/Mn	
Respiratory Frequency RF : Puppy (Juvenile dog)= 18-22 Mvmt/Mn ; adult : 14-18=Mvmt/Mn	
Ovulation type: spontaneous Ovulation , Cycle type : continuous cycle, cycle duration : 6 months, Estrus duration : 19 days	
Gestation : 9 weeks	

### • DIFFERENTS REGIONS OF THE DOG'S BODY

In the following figure the differents regions (parts) of the dog's body



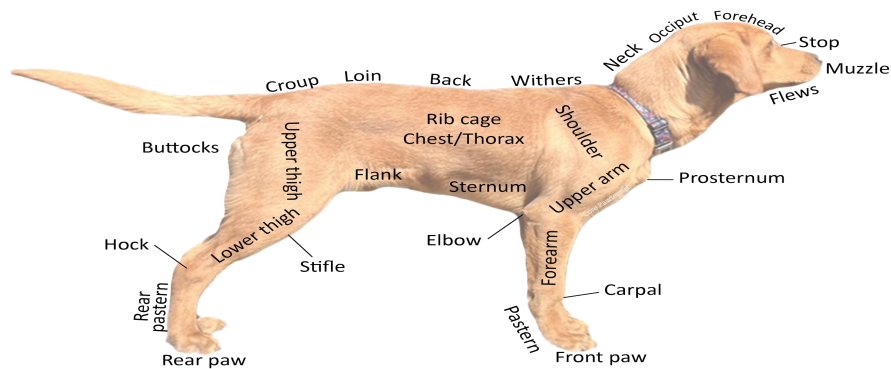


Figure 1 : different regions (parts) of the dog's body in French and in English ( Top : corepawtential.com; bottom: CFI ; 23.11.2009 / Standard FCI N° 2 )

### 3. GENERAL CANINE ETHNOLOGY

#### 3.1. VARIATIONS IN PHYSICAL FORM

##### 3.1.1. CEPHALIC VARIATIONS

The shape of the skull varies from one dog breed to another. The cephalic type thus proves to be an important morphological factor. There are 3 types among our dogs:

##### a. Brachycephalic type

###### - Definition

The pet's head is short, while being fairly wide. Here you find breeds such as the French Bulldog or the Boxer (Photos below).

##### b. Mesocephalic type

###### - Definition

This concerns the majority of our companions. The head shape is of medium length, the same for the width. Examples include the Labrador or the Barbet.

##### c. Dolichocephalic type

###### - Definition

The heads of these dogs are thin and elongated. The Whippet, Azawakh (See photo below), and Doberman fall into this category.

### 3.1.2. CONFORMATION ACCORDING TO PROPORTIONS

Three types are distinguished according to variations in proportions: Longilinear breeds.

Brachylinear breeds. Mediolinear breeds.

#### a. Longilinear breeds

- **Definition**

These breeds with a slightly marked stop have long lines, more developed in length than in width, tall and long. The head is long with a narrow forehead and a long muzzle, the neck is elongated, long fine legs, with a light body, but nevertheless very muscular and sinewy. Good aptitude for running. Examples: Azawakh breed (photo below), Greyhound, Sloughi or Arab Greyhound, Borzoi, Tazi, Saluki, Deerhound, Spanish Greyhound, and Chart Polski.

#### b. Brachylinear breeds

- **Definition**

These breeds have a very pronounced stop; they are dogs developed in width with a broad forehead, a short face; the head appears sunken into the chest due to the shortening of the neck, the chest is square, the limbs are short, which makes the animal appear stocky. The best example remains the molossers. Examples: the Pekingese and the French Bulldog (See photo below).

#### c. Medium-line breeds

- **Definition**

Breeds of this type are intermediates between the two extreme types. Of medium conformation, with a square head and a very broad forehead, they present a balanced silhouette, with a moderately marked stop. Examples: Beagle, Border Collie, Boxer (See photo below), Basenji, Australian Cattle Dog, Brittany Spaniel, Australian Shepherd, Portuguese Water Dog, Rough Collie, Australian Kelpie.

### 3.1.3. CONFORMATION ACCORDING TO PROFILE

The silhouette is the outline that indicates the contour of the dog with a simple line. The examination of the different animal silhouettes shows that the lines thus formed are sometimes straight and sometimes curved, the curves being sometimes convex and sometimes concave. Three types are distinguished as follows:

#### a. The rectilinear type

**• Definition**

In an animal of this type, all the lines of the silhouette have the same shape. The profile of the forehead and the muzzle draws a straight line (parallel), the stop very pronounced. Examples: German Shepherd (photo below), Gordon Setter, Malinois

**b. The convex type**

If the muzzle is arched and lowered, stop erased or even absent, the forehead is convex, all the lines of the dog will be convex. Example: Bull Terrier, Bedlington Terrier

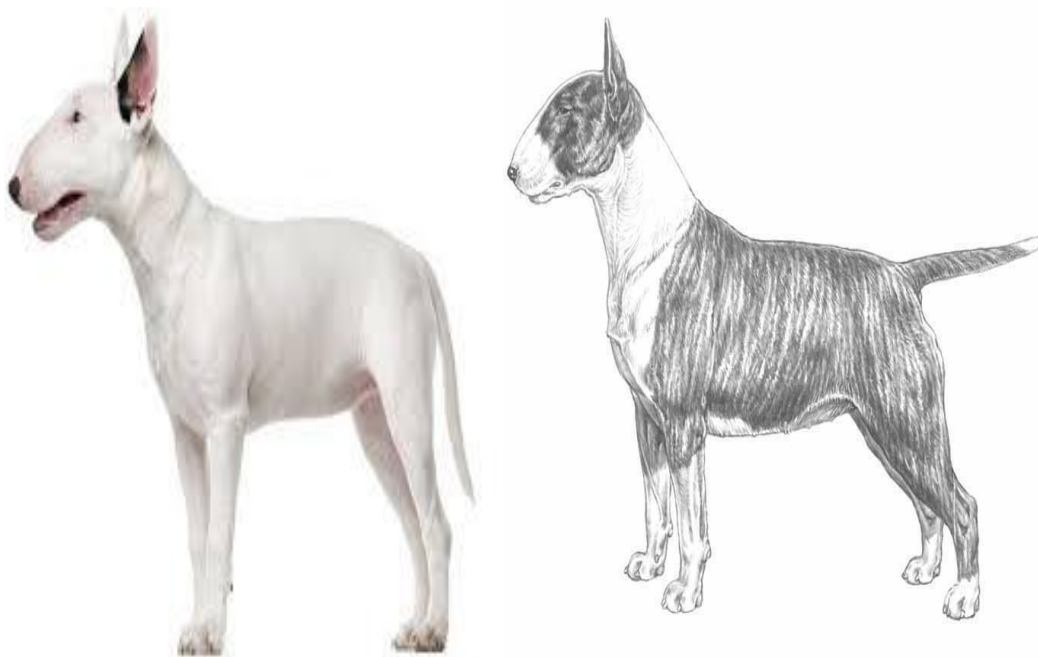


Figure 2: Bull Terrier Breed (Source: Illustration by M. Davidson, ©NKU Picture Library; 23.12.2011 / FR, FCI Standard No. 11, Chien.com)

**c. The concave type.****•Definition**

On the contrary, a concave profile with an upturned muzzle, the stop is very pronounced, as well as a more or less recessed face and a very domed skull.

**•Examples**

Boxer (See photo below), American Bulldog

**3.1.4. VARIATIONS OF THE PHANEROPTIC****a. Hair Color and Pigmentation**

The different terms used to refer to a dog's entire coat, also called the coat, are three: color, coat, and effects.

- Colors: names of the colors used.

- Coats: they can be solid, with spots, or of different colors.

- Effects: the color of the hair can be, for example, gradient or faded. The coloration of a dog's coat results from the presence of pigments (melanins), which exist in two forms:

**- Eumelanin or dark pigment, black or brown**



Figure 3: Eumelanic coat (Brown) - (Black)

**- Phaeomelanin or light pigment, fawn.**



Figure 4: Phaeomelanic coat (Pale fawn)

**- In the absence of pigment, white is obtained.**



Figure 5 : White coat (Le Samoyed ; Origin : Russia -Type Spitz Source chien.com FCI-07.10.2019 / FR. Standard FCI N° 212

### •Coat Variation

The length of the hair covering the body, its hardness, and its texture vary depending on the level of selection of the breeds for their woolly abilities. The following 4 varieties are distinguished:

- **Long hair:** Poodles, Afghan Hound (See photo below), Miniature Spitz or Pomeranian, Long-haired Collie, Shetland, Bobtail, Komondor, Bearded Collie, Tibetan Terrier, Bernese Mountain Dog, Samoyed, Chow Chow, Bolognese (Piamore, 2023)

- **Medium or semi-long silky, wavy, or woolly hair with a length more than 2 cm and less than long hair:** Catalan Sheepdog, Cocker, Briard, Lhasa Apso, Golden Retriever.

- **Short hair:**

**Large size:** Weimaraners, Great Dane, Mastiff, Rhodesian Ridgeback, Beagle, Italian Greyhound, Labrador, Rottweiler, Dalmatian, Hungarian Pointer, Boxer, Basenji, Whippet.

**Small size:** Chihuahua, Dachshund, Pug, Miniature Pinscher, French Bulldog (See photo below), Jack Russell Terrier, Boston Terrier

- **Hairless:** Peruvian Hairless Dogs, Chinese Crested Dog, Argentine Pila Dog, American Hairless Terrier, Xoloitzcuintle or Mexican Hairless Dog, Bolivian Hairless Dog.

### 3.1.4. VARIATIONS IN ENERGY

This classification corresponds to the different abilities and uses of dogs, including:

- a. Basset: type of dog having the body of a larger dog from which it is derived, supported by shortened limbs.
- b. Bichon: small companion dog with long or short hair, curly or silky.
- c. Bouvier: dog used to herd cattle.
- d. Brachet: in the Middle Ages, medium-sized hound with short hair.
- e. Braque: Short-haired Pointer dog.
- f. Briquet: type of hounds that represents the harmonious reduction of a larger type from which it is derived and which, in size, is between the original dog and the basset.
- g. Couchant Dog: pointing dog trained for net hunting that was flushed both onto the crouching dog and the birds.
- h. Hound: a dog with drooping ears that scents, pursues, vocalizes, and eventually catches the hunted animal on the run.
- i. Pointing Dog: a dog that freezes when it senses game nearby.
- j. Water Dog: a hunting dog for marshes looking for waterfowl. It is primarily a retriever.
- k. Mountain Dog: a type of long- or medium-haired mastiff that has often been used as a guard dog for mountain herds or on plateaus, such as the Anatolian. The mountain dog type includes the Saint Bernard or the Pyrenean Mountain Dog.
- l. Orderly Hound: a hound that hunts in a pack, in "good order."
  
- m. Bloodhound: a hunting dog specialized in tracking wounded big game, also called "blood tracking."
- n. Mastiff: a dog with a massive and imposing body, smooth coat, large head with a squashed nose, pronounced stop, semi-erect ears, broad chest, powerful legs, and a bushy tail.
- o. Spaniel: hunting dog with long or medium-long hair, often silky in texture, eumetric, straight, of medium lines. Continental spaniels are pointing dogs. British spaniels, called Spaniels, are flushing dogs.
- p. Griffon: pointing dog or scent hound with long or medium-long hair, scruffy or tousled, or wiry.
- q. Flusher: a dog that, like Spaniels, flushes out game, that is, makes it move, without chasing it like a scent hound or stopping it like a pointing dog.
- r. Bloodhound: scent hound with a very fine nose that tracks at the end of a leash, silently.

s. Molossus: large guard dog with a broad head, very powerful body, and thick muscles.

Mastiffs are molossuses.

t. Pointer: short-haired pointing dog that marks a stop by pointing its nose in the direction of the game.

u. Retriever: hunting dog intended to locate and bring back wounded or killed game.

v. Setter: pointing dog from the British Isles. Like the old 'couching' dog, it points lying down or semi-lying down.

w. Spaniel: French word that became English, referring to spaniels of British, Irish, and American origin.

x. Terrier: dog that hunts animals hiding in burrows, that 'hunts underground'.

y. Toy: very small companion dog. **(cited by Boukhechem, 2023).**

## 4. SPECIAL ETHNOLOGY

### 4.1. RACES IN THE WORLD

Four major dog morphologies can be distinguished (Megunin P cited by Boukhchem, 2024): Lupoids, molossoids, braccoids, and graioids. The term morphotype will also be used.

#### 4.1.1. LUPOID DOGS

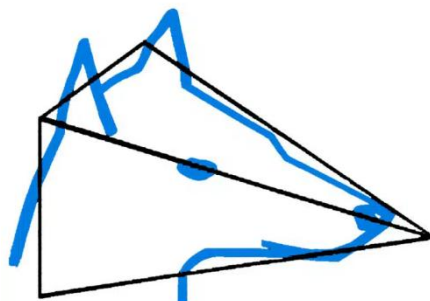


Figure 6 : Diagram of the head of lupoid dogs

- **Characteristics**

This dog morphology has anatomical characteristics **reminiscent** of those of the **wolf**. The head has a rather '**pyramidal**' shape with **ears** generally **erect** on the head.

•**Examples:** We thus find:

*a. herding dogs* such as: German Shepherd, Australian Kelpie, Belgian Shepherd, Schipperke, Croatian Sheepdog, Catalan Sheepdog, Majorca Sheepdog, Australian Shepherd, Beauceron – Bas Rouge, Briard, Picardy Shepherd, Pyrenean Shepherd, Bearded Collie, Border Collie, Old English Sheepdog – ancestral English Shepherd, Shetland Sheepdog, Smooth Collie, Bergamasco Shepherd, Maremma and Abruzzi Sheepdog, Dutch Shepherd, Saarloos Wolfdog, Dutch Schapendoes, Polish Lowland Sheepdog, Tatra Shepherd, Serra da Aires Sheepdog, Romanian Mioritic Shepherd, Carpathian Shepherd, South Russian Shepherd, Czechoslovakian Wolfdog, Slovak Cuvac, White Swiss Shepherd, Old English Sheepdog – ancestral English Shepherd, Shetland Sheepdog, Smooth Collie, Welsh Corgi, Komondor, Kuvasz, Mudi, Puli, Pumi.

### **Example German Shephred (herd guardian, rescue, and police)**

- **Origin**

European dogs from Germany

- **Characteristics**

It is a very popular dog, of utility and versatile service par excellence (herd guardian, rescue, and police), it has all the qualities and intelligence required to adapt to all types of situations. It is medium-sized, slightly longer than tall, well-muscled, with a shoulder height of **60-65 cm** for males weighing **30 to 40 kg**, **55-60 cm** for females weighing **22 to 32 kg**, the length of the body exceeding the height at the withers by 10-17%. The coat is double with hair and undercoat; the outer coat should be as dense as possible, straight, harsh, and lying flat; the hair is short on the head including the inner side of the ear flaps, on the front of the limbs, on the feet and toes; it is slightly longer and denser on the neck. The hair color is black, with reddish-brown, brown, or yellow markings up to light gray, with small discreet white spots on the chest; The undercoat is a light gray. The head is wedge-shaped, both from the front and the side, the forehead is only slightly rounded, **The muzzle is straight**, the lips are well stretched, tight, and dark in color, and the nose should be black. The ears are erect,

symmetrical, and end in a point. The croup is long and slightly oblique, the tail reaches at least the hock but should not exceed the middle of the metatarsus, it is carried hanging with a slight curve. The forelimbs are perfectly parallel, the feet are rounded, the toes are close together and arched, and the pads are hard. The hindlimbs are slightly angled backward while remaining, viewed from behind, parallel to each other. The thigh and the lower leg are almost the same length, forming an angle of about 120°. (Paschoud & Triquet, 1994 cited by Adili, 2015).



Figure7 : German Shepherd (FCI- Standard-FCI N° 166°)

### ***b. Nordic Dogs***

#### **- Definitions**

These are dogs that can withstand the cold. Nordic dogs have a denser undercoat and generally also longer and thicker hair. These morphological characteristics allow them to perfectly withstand even the harshest cold.

**- Examples** The Norrbotten Spitz, The Icelandic Sheepdog, The Karelian Bear Dog, The Swedish Lapphund, The Wiccan Spitz, The Laika, The Norwegian Puffin Dog (or Lundehund), The Norwegian Buhund, The Norwegian Elkhound, The Greenland Dog, The Samoyed, The Saint Bernard, The Pyrenean Mountain Dog, The Alaska Malamute, The Leonberger, The Newfoundland, The Siberian Husky, The Tibetan Mastiff, The Caucasian Shepherd, The Akita Inu.

### **c. Terriers**

There are 4 breed sections, detailed as follows according to the classification of the International Canine Federation (FCI):

### **Section 1: Large and medium-sized terriers**

German Hunting Terrier, Brazilian Terrier, Airedale Terrier, Bedlington Terrier, Border Terrier, Fox Terrier, Lakeland Terrier, Manchester Terrier, Parson Russell Terrier – Reverend Russell's Terrier, Welsh Terrier, Irish Terrier, Kerry Blue Terrier



Figure 8 : German hunting terrier (Chien .com ; 12.10.2018 / FR, Standard-FCI N° 103

### **Section 2: Small-sized Terriers**

Australian Terrier, Cairn Terrier, Dandie Dinmont Terrier, Norfolk Terrier, Norwich Terrier, Sealyham Terrier,

Skye Terrier, Scottish Terrier – Scottish Terrier, Jack Russell Terrier, West Highland White Terrier, Japanese Terrier, Czech Terrier

### **Section 3: Bull-type Terriers**

American Staffordshire Terrier, Bull Terrier, Miniature Bull Terrier, Staffordshire Bull

**Section 4: Terrier:** Companion Terriers Australian Silky Terrier – Silky-coated Australian Terrier, English Toy Terrier, Yorkshire Terrier.

### 4.1.2. MOLOSSOID-TYPE DOGS (guard dog, molosser, watch dog)

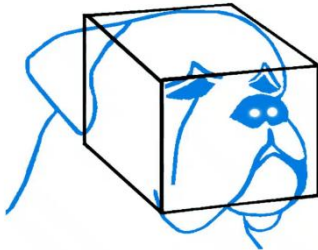


Figure 9: Diagram of the heads of Molossoid-type dogs

#### • Characteristics

For these types of dog morphologies, the head is **rather round**. The dog has a **short muzzle**. The **body** is particularly **massive**. According to the FCI, Molossoids belong to **group 2**, for which they constitute the second section. They are divided into two subsections: Molossoids of the mastiff type and Molossoids of the mountain type.

**Examples:** This includes certain dog breeds such as: a. the French Bulldog, b. the Rottweiler, c. the Leonberger, and d. the Boxer.

#### a- Mastiffs (Dogs)

##### •Definitions

According to the F.C.I. International Cynological Federation, mastiffs are molossoids with a massive head and body, a short muzzle, long and thick jowls, and earsshort and drooping. Molossers belong to group 2, of which they constitute the second section.

##### •Examples

The following breeds are part of this category: Shar Pei, Neapolitan Mastiff, Fila De Sao Miguel (Cão Fila de São Miguel), Majorca Mastiff, Dogo Argentino, Cane Corso, English Bulldog, Boxer, Broholmer, Bullmastiff, Great Dane, Dogue de Bordeaux, Fila Brasileiro, Mastiff, Rottweiler, Tosa, Majorcan (Ca de Bou) (FCI).

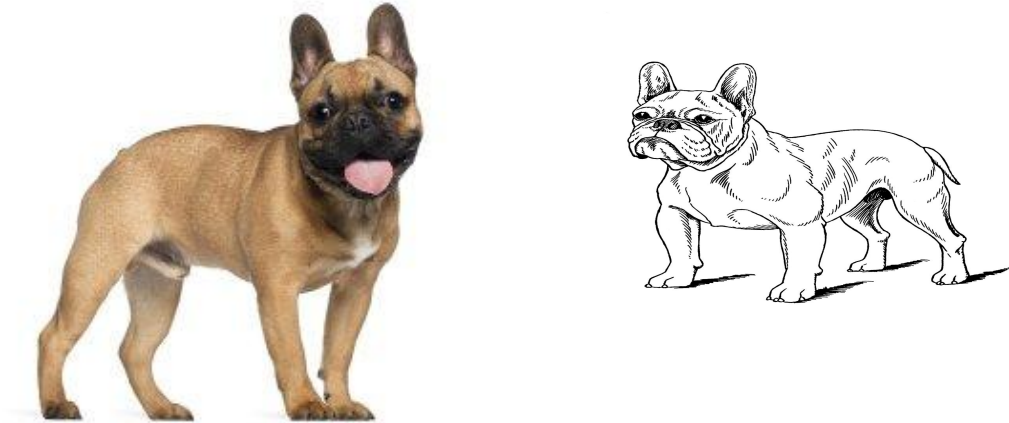


Figure10 : French Bulldog ( Chien.com ; 18.09.2023 / FR, Standard FCI N° 101)

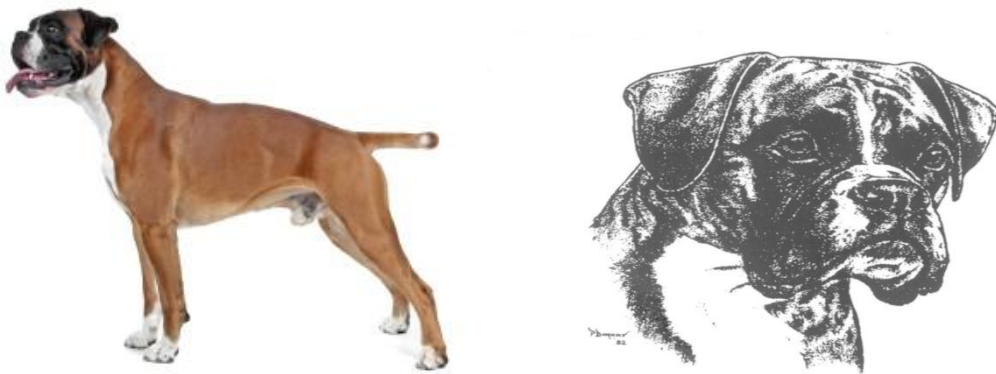


Figure11 : Boxer (Origin Germany) ; (Chien.com ; 18.09.2023 / FR , Standard FCI N° 101 )



Figure 12 : The Rottweiler (Origin : germany : Meyer,2024 ; FCI : 24.07.2018 / FR, Standard-FCI N° 147)

## **b. Mountain dogs.**

## Definitions

These are dogs for taking care of herds, for guarding, for rescuing people in danger, or for various other tasks; man's best friend has always been very useful in the mountains.

**Examples :** The Bernese Mountain Dog, The Saint Bernard, The Tibetan Mastiff, The Entlebucher Mountain Dog, The Appenzeller Mountain Dog, The Greater Swiss Mountain Dog, The Leonberger, The Great Pyrenees, The Kuvasz, The Abruzzo Sheepdog, The Bulgarian Shepherd, The Anatolian Shepherd, The Siberian Husky, The Icelandic Sheepdog, The Serra da Estrela Dog, The Hovawart, The Slovak Cuvac, The Spanish Mastiff, The Pyrenean Mastiff, The Caucasian Shepherde

### Example : Pyrenean Mastiff

- **Origin**

Country of origin is Spain. It is part of the Group: Pinscher and Schnauzer type dogs - Molossoid - Mountain and Swiss Cattle Dogs.

- **Characteristics**

It is a very large and well-proportioned dog. Despite its imposing size, it is surprisingly lively and agile. Its large head of moderate length ends with a triangular muzzle when seen from above and a well-blackened, moist, and voluminous nose; triangular ears fall along the cheeks but partially stand up when it is attentive. Its coat is dense, thick, and long, measuring 6 to 9 cm and covering the whole body, from the tip of its long tail to the ends of its paws. Its coat is white with a well-defined mask of gray, brown, black, or fawn color. There may be irregularly shaped well-defined patches of the same color as the mask on the rest of the body, but the tip of the tail and paws must always be white. Tricolored or entirely white subjects are not accepted by the breed standard. Male size: 77 to 85 cm, Female size: 72 to 80 cm, Male weight: 70 to 110 kg, Female weight: 55 to 90 kg. (FCI-St. No.92/30/08/2002)



Figure 13: Pyrenean Mastiff (Chien.com)

### 4.1.3. BRACCOID-TYPE DOGS

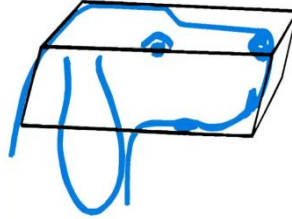


Figure 14: Diagram of the heads of Braccoid-type dogs

#### • Characteristics

Unlike Molossoid dogs, the morphology of Braccoid dogs is recognized by a long, square muzzle, as seen in the Weimaraner. Unlike Lupoids, Braccoids have drooping ears.

#### • Examples

Hunting dogs are Braccoids. More specifically, those from:

a. Group 6 (Scent hounds), b. Group 7 (Pointing dogs), c. and Group 8 (Retrievers, flushing dogs, and water dogs), as well as Dachshunds.

#### a. Hounds

##### - Definitions

a. **Hounds and bloodhounds** are specialized in pursuing game, either alone or in packs.

##### - Examples

There are several sections according to (FIC): Section 1 includes hounds, Section 2 includes bloodhounds, and Section 3 includes related breeds.

#### Section 1: includes hounds

##### • Section 1.1. Large hounds

Belgium: St. Hubert Hound.

United States: American Foxhound, Black and Tan Coonhound (Black and Tan dog for raccoon hunting)...

France: Poitevin, Billy, French Tricolor, ...

#### • Section 1.2. Medium-sized hounds

Austria: Austrian Black and Tan Hound (Brandlbracke - Vieräugl), Styrian Rough-haired Hound (Steirische Rauhaarbracke), ...

France: Anglo-French Small Game Hound, Ariégeois, Beagle-Harrier.....

#### •Section 1.3. Small scent hounds

Germany: German Bracke (Deutsche Bracke), Westphalian Dachsbracke (Westfälische Dachsbracke). France: Norman Artesian Basset, Blue Gascony Basset, ....Great Britain: Basset Hound, Beagle

#### Section 2: Blood tracking dogs

Germany/Sweden: Bavarian Mountain Blood Tracking Dog (Bayrischer Gebirgsschweiss Hund), Hanoverian Blood Tracking Dog (Hannover'scher Schweiss Hund). Austria: Alpine Basset (Alpenländische Dachsbracke)

#### Section 3: Related breeds

Croatia: Dalmatian (Dalmatinac). South Africa (Kennel Union of Southern Africa, Zimbabwe): Rhodesian Ridgeback.

### b. Pointing dogs-

#### Definitions

The pointing dog group includes both continental pointing dogs and British and Irish pointing dogs. As the name of the group indicates, pointing dogs are distinguished by a pointing stance when they have spotted game.

#### - Examples

There are 2 sections below: Section 1: continental pointing dogs and Section 2: British and Irish pointing dogs

## 1. Section1: Continental pointing dogs

### 1.1. Types of Pointers: such as

**Germany:** German Shorthaired Pointer (Deutsch Kurzhaar), Weimaraner, Spain: Perdiguero de Burgos

**France:** Ariege Pointer, Auvergne Pointer, Bourbonnais Pointer....etc

**Example: French Braque (The braque francais)**

#### •Origin

It is from France, either from Gascogne or the Pyrenees.

#### •Characteristics

**Small-sized dog, *Pyrenees type***, with a shoulder height of **47-58 cm** for females and **47-56 cm** for males, or large-sized, ***Gascogne type***, with a shoulder height of **58-69 cm** for males and **56-68 cm** for females. Weight around **30 kg** for males and **28 kg** for females. **Short and thick coat**, coat of various colors: brown, brown and white, brown and white speckled, or brown with tan markings, with a barely noticeable stop. Docked tail..

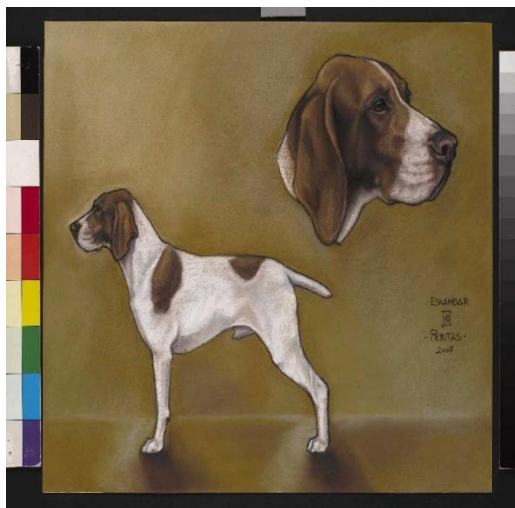


Figure 15: French Gascon Braque (top: FCI- Standard FCI No. 133) and Pyrenees (bottom): (Chien.com website)

### 1.2. Spaniel Type: such as

Germany: Small Münsterländer Spaniel (Kleiner Münsterländer), Large Münsterländer Spaniel (Grosser Münsterländer), German Long-haired Pointer (Deutsch Langhaar). France: Picardy Blue Spaniel, Brittany Spaniel, French Spaniel. Netherlands: Drenthe Partridge Dog (Drentse Patrijshond), Frisian Pointer (Stabyhoun)

**1.3 Griffon type** as: France: Wire-haired Pointing Griffon Korthals. Italy: Italian Wire-haired Pointing Dog (Spinone Italiano). Czech Republic: Czech Wire-haired Pointing Dog (Český Fousek).

## 2. Section 2. British and Irish Pointing Dogs

**2.1. Setter Great Britain:** English Setter, Gordon Setter. Ireland: Irish Red Setter, Irish Red and White Setter

### Example : English Setter

- **Origin**

United Kingdom, it is a pointing dog

- **Characteristics**

The English Setter is a **medium-sized** dog, with a solid and compact build. Its coat is soft and flat, feathered on the ears, chest, legs, and tail. Five coat colors are allowed: black and white, orange and white, lemon and white, brown and white, and finally tricolor. The tail, of medium length and carried low, is set at the level of the back. Male size: **65 to 68 cm**. Female size: **61 to 65 cm**. Male weight: **18 to 23 kg**. Female weight: **18 to 22 kg** (FCI-Std. No. 002 / 23.11.2009)

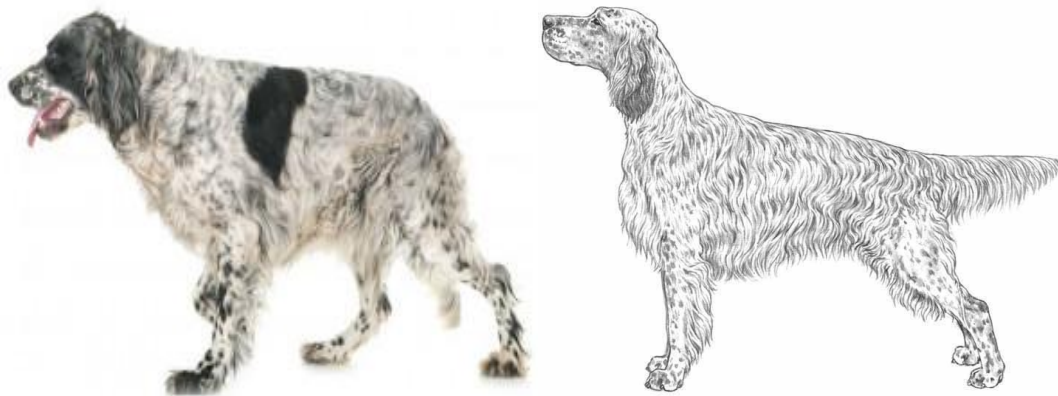


Figure16 : English Setter (chien.com ; ©M.Davidsonillustr. NKU Picture LibraryCFI23.11.2009 / F. Standard FCI N° 2)

## 2.2 Pointer

**Example:** English Pointer

### •Origin

Its origin is the United Kingdom; it is a pointing dog.

### •Characteristics

**Large-sized** dog. The coat of the English Pointer is most **often bicolor**, mixing white with another color: lemon, orange, brown, or black. Single-colored or tricolored individuals are rarer but also recognized by the breed standard. **Drooping ears**. Height at withers = **60 cm**. Lifespan: 12 to 15 years. Female weight: **20 to 29 kg**. Male weight: **25 to 34 kg**. Female height: **61 to 66 cm**. Male height: **63 to 69 cm**. Tail fairly short and straight. (FCI-Standard No. 001 / 23.11.2009)

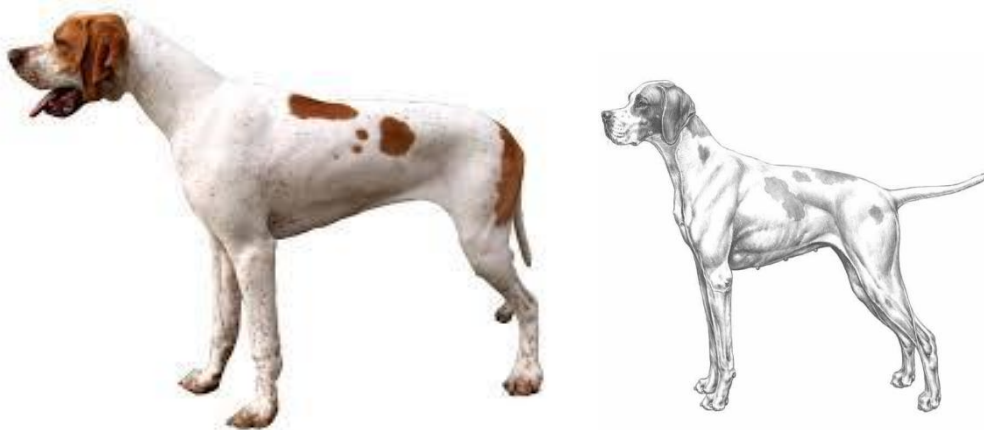


Figure 17 : English Pointer ( ©M.Davidson, illustr. NKU Picture Library : 23.11.2009 / FR, Standard FCI N°1)

## 4.1.4. The Graïoids

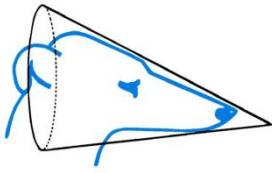


Figure 18: Diagram of the head of Greyhound-type dogs

### •Characteristics

This dog morphology is not easy to describe. But you surely know them. Like their slender body, their head is rather elongated. Fineness particularly characterizes this morphotype, which defines these breeds of dogs for running and speed. The ears are rather small.

•**Examples:** These are **greyhound- type** (sighthound-type) dogs

#### a. The Galgo or Spanish greyhound.



Figure 19 : Spanish Greyhound or (Galgo; 24.05.2002 / FR; Standard FCI N° 285 )

- **Origin**

From Spain as it's name indicates

- **Characteristics**

This breed is a sighthound of good size, **eumetric subconvex**, **sublongilinear**, and **dolichocephalic**. With a compact bone structure, long and narrow head, ample thoracic

capacity, very tucked-up belly, and very long tail. Hindquarters well balanced and muscular. Coat fine and short or hard and semi-long. Of a serious and reserved character; however, in hunting, it occasionally shows great energy and vivacity. Sublongilinear structure, length slightly exceeds height. One should seek proportions and functional harmony, both in a static position and in movement (FCI Standard No. 285). This dog exists in very large numbers on Algerian soil because of its speed and athletic body.

### b. English Greyhound

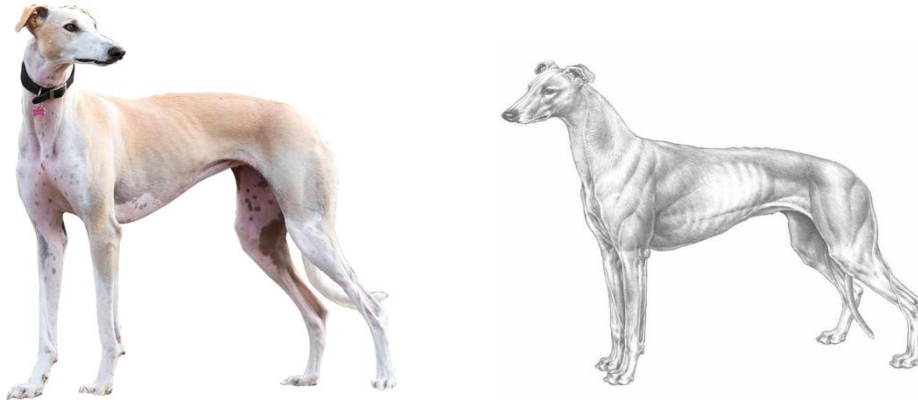


Figure 20 : English Greyhound (Greyhound; 18.05.2011 / FR, Standard F.C.I. N° 158;  
©M.Davidson, illustr. NKU Picture Library)

- **Origin**

Originates from the Great British , This dog is considered the greyhound breed par excellence,

- **Characteristics**

This breed has a powerful musculature and very high speed; this dog can reach up to **72 km/h**, only the cheetah can beat the Greyhound in speed. Strongly built, well balanced, generously proportioned, with powerful musculature, of harmonious construction. The head and neck are long, the shoulders well sloped and well defined, the chest high and broad, the loin slightly arched, the hindquarters powerful, the limbs and feet flawless, with a suppleness of the limbs that greatly enhances the type and nobility that distinguish the Greyhound. **The straightness**, amplitude, and ease of its ground-level movements allow it to cover terrain at high speed. The hind limbs engage well under the body to provide a lot of thrust (F.C.I. Standard No. 158). Currently, this breed is gaining ground in Algeria and is favored compared to all other breeds..

### c. The Persian Greyhound (The Saluki)



Figure 21 : The Persian Greyhound (The Saluki) ( Haddam, 2022) :

- **Origin**

It is an Asian breed. Originally, each tribe had Salukis best suited for hunting the specific game of its territory, but according to Middle Eastern tradition, Salukis are neither sold nor bought but only offered as a mark of honor. It follows that those that were thus offered to Europeans, and brought to Europe, varied according to the great diversity of territories and climatic zones from which they came. The 1923 English standard was the first official European breed standard and was established in order to encompass all these different original types of Salukis, particularly concerning the role of the Saluki in Arab tradition and the vast territories of the Middle East where the Saluki has been used for hunting for millennia..

- **Characteristics**

Overall, the Saluki must express grace and harmony of form as well as the great speed and endurance associated with strength and liveliness. Short-haired variety: The characteristics are identical except for the coat, which does not have fringes. (FCI Standard No. 269).

## 4.2. LOCAL BREEDS

### 4.2.1. Sloughi or Also Arab Greyhound

- **Origin**

It is a breed originating from North Africa, although its nationality is Moroccan.

- **Characteristics**

It is an intelligent, proud, and independent greyhound. Its extremely fit body is covered with short hair of light color, **sandy** or **fawn**. It is a muscular, slender, and elegant dog, with a royal appearance, easily blending with sandy environments. It was once used in the desert for hunting gazelles by the great Berber chiefs. Today, it is still used by breeders and even nomads for hunting and guarding (Adili, 2015). The height at the withers (**HW**) for males is normally (**66 to 74 centimeters**). For females, it is normally (**61 to 68 centimeters**). (Standard: AKC). Permitted coat: mottled, with scalloped or 'splashed' spots, auburn color



Figure 22: Sloughi or Arab Greyhound (Haddam, 2020; 08/01/1998 / FR , Standard FCI N°188)

#### 4.2.2. The Tuareg Greyhound (The Azawakh)

- **Origin**

It originates from the south of Algeria, nicknamed the Tuareg's greyhound, it hunts by sight for game (gazelle, hare, ostrich) and for fighting predators (hyena, jackal). According to the (Standard AKC) the Azawakh is an African greyhound of the Afro-Asian type, appearing in Europe around 1970.

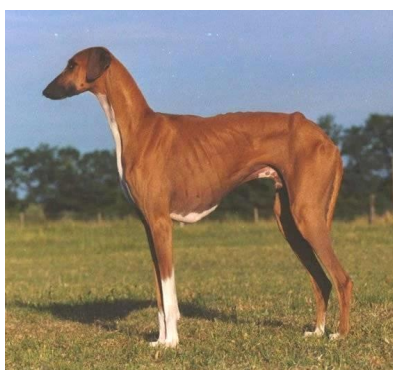


Figure 23 : The Touareg greyhound or l'Azawakh (15.10.2019 / FR ; Standard-FCI N° 307)

- **Characteristics**

The Azawakh sighthound gives a general impression of great elegance and is almost the same **size as the Sloughi**. Its bone structure and musculature show through fine, lean tissue. Topline - Almost **straight** or **rising toward the hips**. Coat short. Height at withers = **63.5-73-66 cm** for males and **58.42-68.58 cm** for females, weight is **19.95-24.94 kg** for males and **14.94-58.42 kg** for females. The withers are fairly prominent. (Standard - AKC).

## 5. DOG COATS

The coat of an animal refers to the color of the hair, mane, and whiskers covering a mammal, mainly concerning their colors. The study of coats is somewhat important because it is a primary element of identification, at least in domestic species. We will mention the different terms used to distinguish between the various coat colors in dogs (Villemin, 1984).

**1- Harlequin Coat:** The harlequin coat is a mottled coat with jagged or 'splashed' spots on a gray or blue background. This is manifested by black spots on a white background (sometimes also referred to as black-mottled white as in the Harlequin Great Dane). For certain breeds, however, the harlequin coat refers more to an equivalent of 'blue merle', that is, gray areas scattered in a black coat. This is notably the case for the Dachshund and the Beauceron.



Figure 24 : Harlequin Coat (Decrouy, 2024)

**2- Aubergine (Tawny) coat:** This coat results from a uniform mix of white hairs and red or fawn hairs.



Figure 25 : Aubergine (tawny , aubere) coat (Decrouy, 2024)

**3- Belton coat:** It is a white coat sprinkled with fine spots (orange, lemon) or speckles.



Figure26 : Belton coat (Decrouy, 2024)

**4- Bicolor coat:** The Bicolor coat is a dress of two distinct colors: black and white, red and white, etc..



Figure27 : Bicolor coat (Decrouy, 2024)

**5- Variegated (Bogarrée) Coat:** Is a coat featuring jagged spots of undiluted pigment on a light background made by diluting the same pigment. Example: white variegated coat with black spots.



Figure28 : Variegated (Bigarrée) coat (Decrouy, 2024)

**6- Blenheim coat :** It is a coat characterized by , red mark on a white background



Figure29 : Blenheim coat (Decrouy, 2024)

**7- Brindle Coat:** It has dark and discontinuous more or less vertical stripes (brindles) on a solid background. It is also found in other domestic animals, such as horses or cows. It is also sometimes referred to as striped or tigered, even though the tiger's stripes actually have a different shape. In dogs, this coat is not very common. However, it can be found in a few breeds, such as the Plott Hound, the Boxer, or the Akita..



Figure30 : Brindle coat (Decrouy, 2024)

**8- Curdled Coat:** It is a white-based coat with brindle spots (French Bulldog).



Figure31 : Curdled coat (Decrouy, 2024)

**9- Smoky Coat:** It is a coat with a more or less light base (notably fawn or sand) shaded with black, brown, or blue.



Figure32 : Sloky coat (Decrouy, 2024)

**10- Merle Coat:** This coat has dark, irregular spots on a lighter background (based color) , often gray. French dogs with this coat are called "harlequins", British dogs are blue merle..



Figure33 : Merle coat (Decrouy, 2024)

**11- Black and Fire coat:** It is a black coat marked with fawn or sand (Black and Tan).



Figure34 : Bllack and fire coat (Decrouy, 2024)

**12- Ombre Coat:** It is a light dress with dark parts.



Figure35 : Ombre coat (Decrouy, 2024)

**13- Piebald (Mixed) Coat:** It is a coat that is characterized by spots of one or two different colors, with all possible shades.



Figure36 : Piebald coat (Decrouy, 2024)

**14- Spotted Coat:** It is a white coat where some colored hairs appear. Colored coat where some white hairs appear, or with small spots, including the speckled coat and the mottled coat.



Figure37 : Spotted coat (Decrouy, 2024)

**15- Particolored coat:** The Particolored coat is a coat whose colors (two or more) are clearly distinct.



Figure 38 : Particolored coat (Decrouy, 2024)

**16- Pied Coat:** The piebald coat is a coat that features a patchwork mix of white and another color. Example: pie-black (white dominates); black-pie (black dominates).



Figure 39 : Pie Black coat (Decrouy, 2024)

**17- Multicolored :** This dress is made up of several colors. Juxtaposition of spots or colored areas.

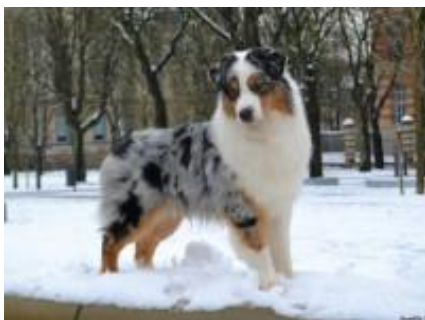


Figure 40 : Multicolored coat (Decrouy, 2024)

**18- Roan Coat:** Is a coat whose white areas show an intimate mixture of white hairs and fawn hairs, and also a mixture of three colors (white, red, black or brown).



Figure41 : Roan coat (Decrouy, 2024)

**19- Ticked Coat:** A ticked coat refers to a mixed hair carrying small specks or spots, which gives the impression of highlights in the fur. In dogs, a few breeds like the Blue Gascony Griffon are known to be ticked. This coat is also found in other species, particularly cats – the Abyssinian being the most well-known example of a ticked cat..



Figure43 : Ticked coat (Decrouy,2024)

**20- Zaine :** It is a uniformly colored coat (Black or Brown) , without white spots, without white hairs.



Figure44: Zaine coat (Decrouy, 2024)

## REFERENCES

1. Anonymous 1: Standard-FCI No. 307). International Cynology Federation.
2. Anonymous 2: AKC Standard; American Kennel Club. Approved February 8, 2018, Effective May 1, 2018.
3. Adili N. 2015: Essay on the determination of the species and breed of domestic animals based on red blood cell morphometry. Doctoral Thesis. 133 p.
4. Boukhchem S. 2024: Animal Ethnology. In: Chapter Canine Ethnology. Veterinary Institute of El-Khroub - University Frères Mentouri Constantine 1.
5. Darwin C. - 1959: On the origin of species by means of natural selection. London, John Murray.
6. Decrouy A. 2024: African Dog Comparison - Breeds and photos. Updated: March 5, 2024 / [https://www.planeteanimal.com/chien-africain-races-et-photos-3272.html#anchor\\_2Comparisons](https://www.planeteanimal.com/chien-africain-races-et-photos-3272.html#anchor_2Comparisons).
7. Freedman A.H., Gronau I., Schweizer R.M., Ortega-Del Vecchyo D., Han E., Silva P.M., Galaverni M., Fan Z., Marx P., Lorente-Galdos B., Beale H., Ramirez O., Hormozdiari F., Alkan C., Vilà C., Squire K., Geffen E., KusakJ., Boyko A.R., Parker H.G., Lee C., Tadisotla V., Siepel A., Bustamante C.D., Harkins T.T., Nelson S.F., Ostrander E.A., Marques-Bonet T., Wayne R.K., Novembre J. - 2014 : Genome Sequencing Highlights the Dynamic Early History of Dogs. PLoS Genetics 10, e1004016. doi :10.1371/journal.pgen.1004016.
8. Haddam HY. 2020 : Caractérisation morphométrique et typologie du lévrier algérien (sloughi) dans le nord de l'Algérie Mémoire de Master. UNIVERSITE de TLEMCEM Faculté des Sciences de la Nature et de la Vie et Sciences de la Terre et de l'Univers .84p. 1.
9. Linnaeus, C. 1758-01-01. Systema Naturæ per Regna Tria Naturæ, Secundum Classes, Ordines, Genera, Species, cum Characteribus, Differentiis, Synonymis, Locis. Tomus I. Editio Decima, Reformata. Laurentii Salvii, Stockholm, 823 pp.
10. Piamore E 2023 : 10 races à poil long . planète animal .Actualisé: 13 décembre 2023 <https://www.planeteanimal.com/10-races-de-chiens-a-poil-long-3647.html>.
11. Thornton Emmons G. - 1991. The Tlinget Indians. Edited with additions by F. de Laguna. Anthropological Papers American Museum Natural History, 70 : 1-489.
12. Vilà C., Savolainen P., Maldonado J.E., Amorim I.R., Rice, J.E., Honeycutt R.L., Crandall K.A., Lundeberg J., Wayne, R.K. - 1997. Multiple and ancient origins of the domestic dog. Science, 279: 1687-1689.
13. 11.Villemin M. 1984 : Dictionnaire des termes vétérinaires et zootechniques. Ed. Vigot.1984. 470p.