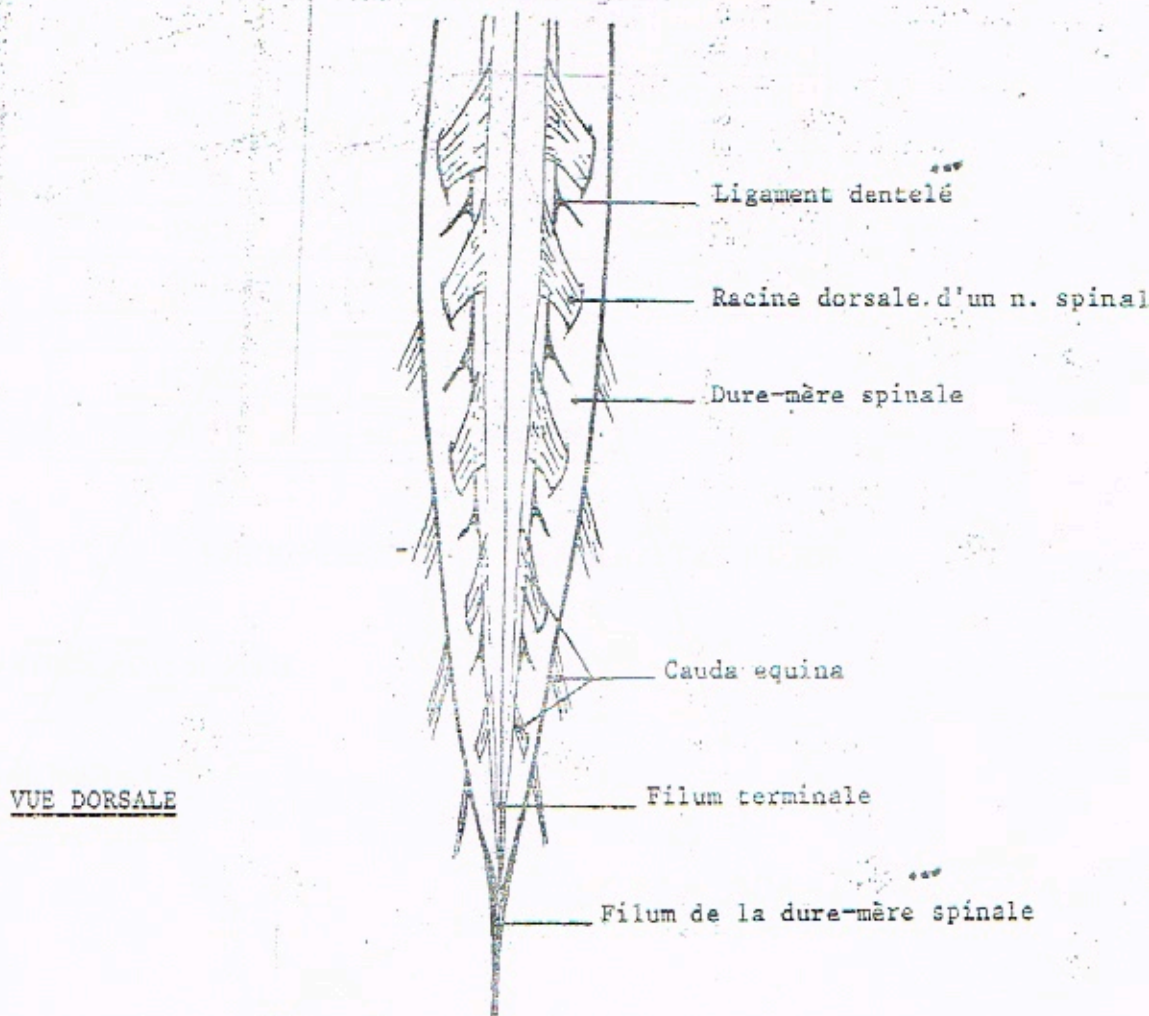


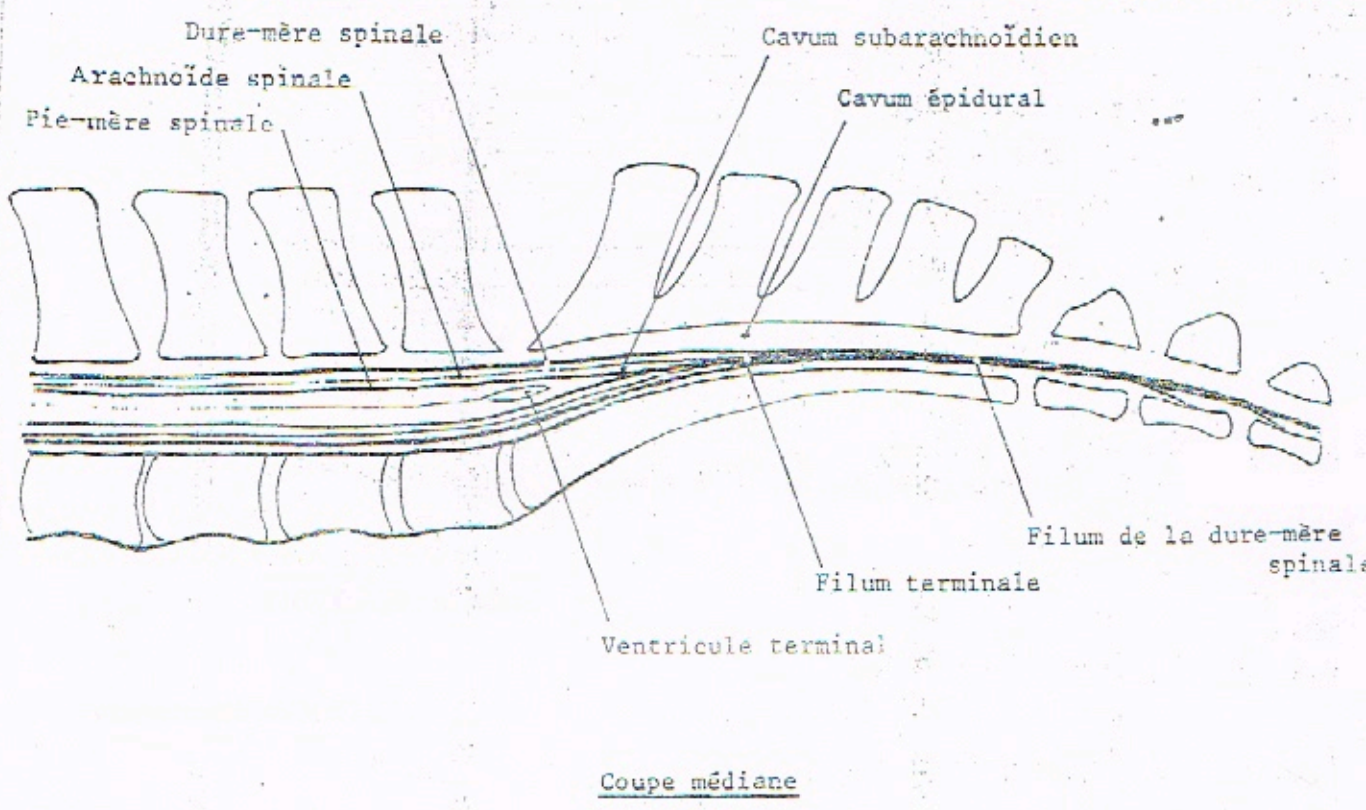
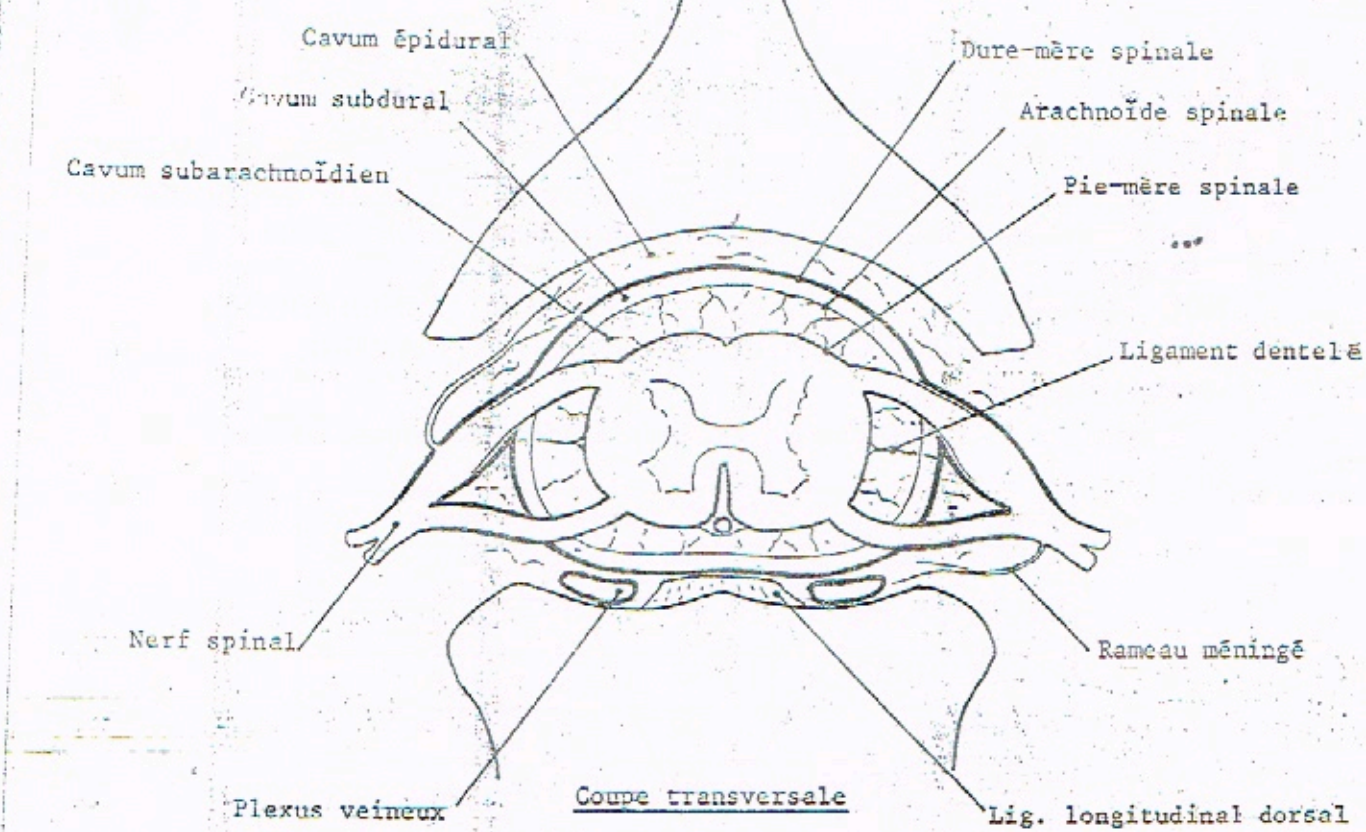
DISPOSITION DES MENINGES SPINALES



VUE DORSALE



MENINGES SPINALES





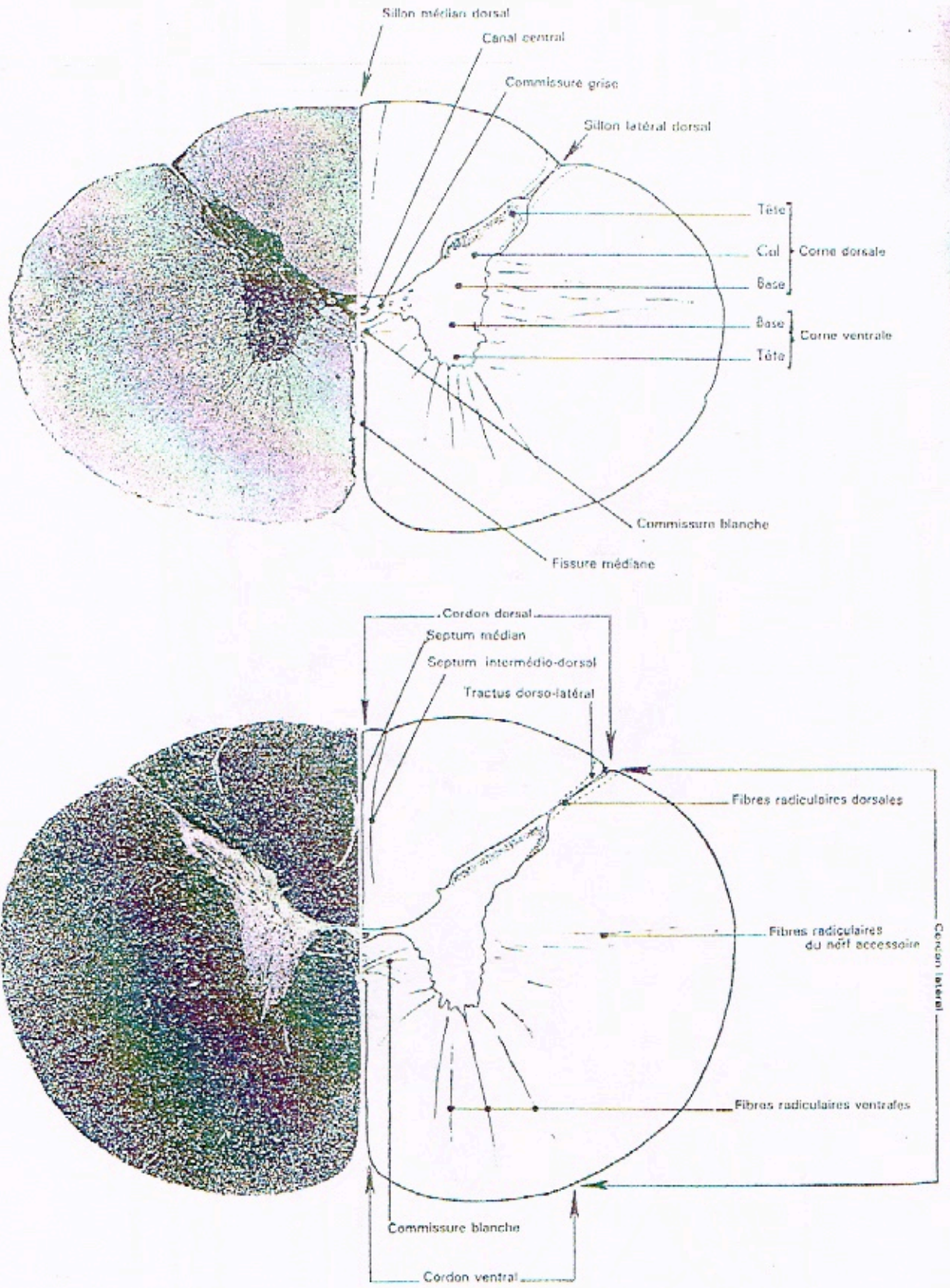


Planche 3 - CONFORMATION INTÉRIÈRE DE LA MOELLE ÉPINIÈRE  
(Cheval - Gr x 4)

En haut : coupe transversale au niveau de C3; coloration argentique de Gleys.  
En bas : coupe transversale au niveau de C4; coloration myélinique de Spielmeyer.



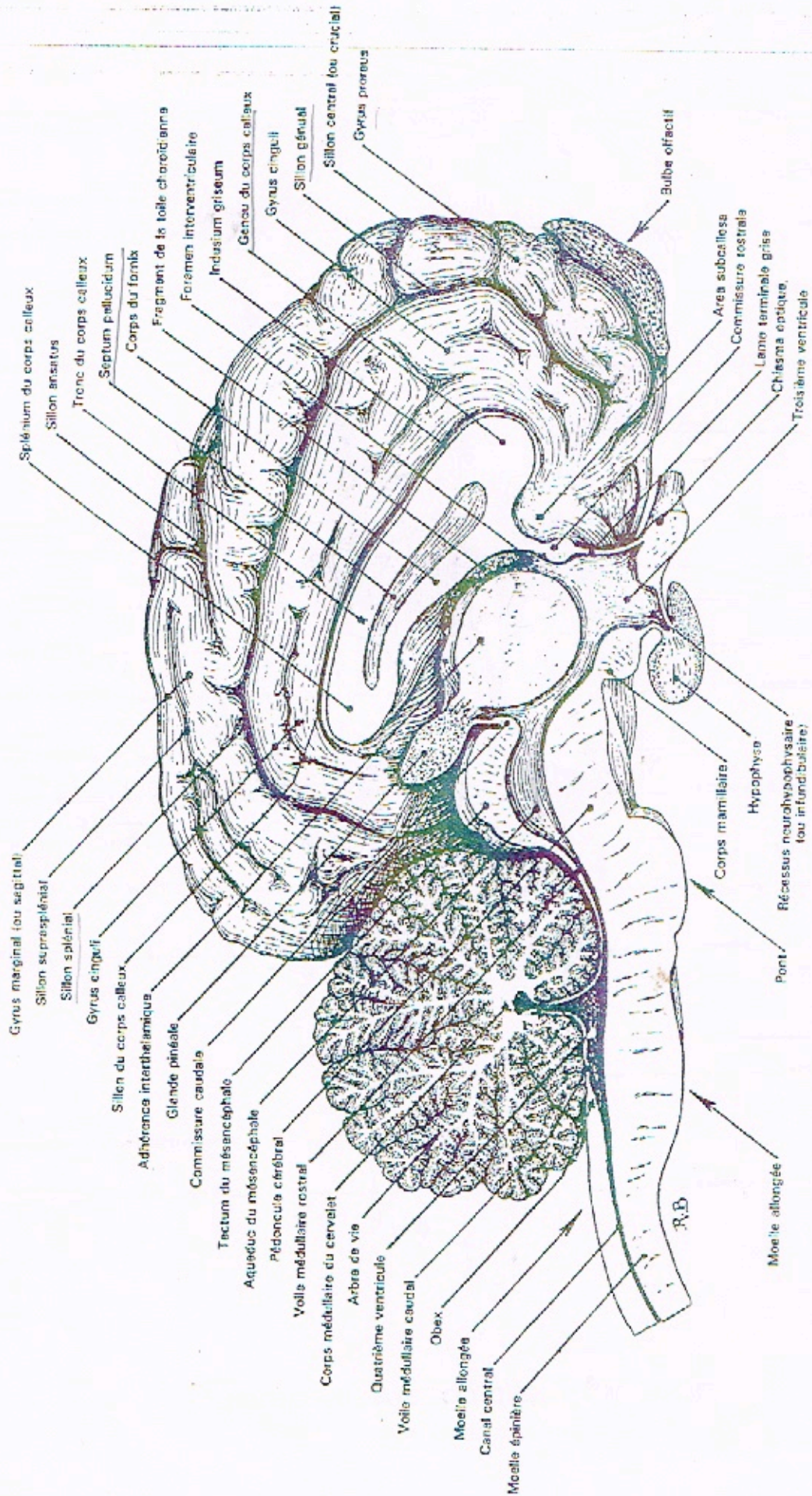


Planche 4 - COUPE MÉDIANE D'UN ENCÉPHALE DE CHEVAL  
 MOITIÉ GAUCHE. VUE MÉDIALE



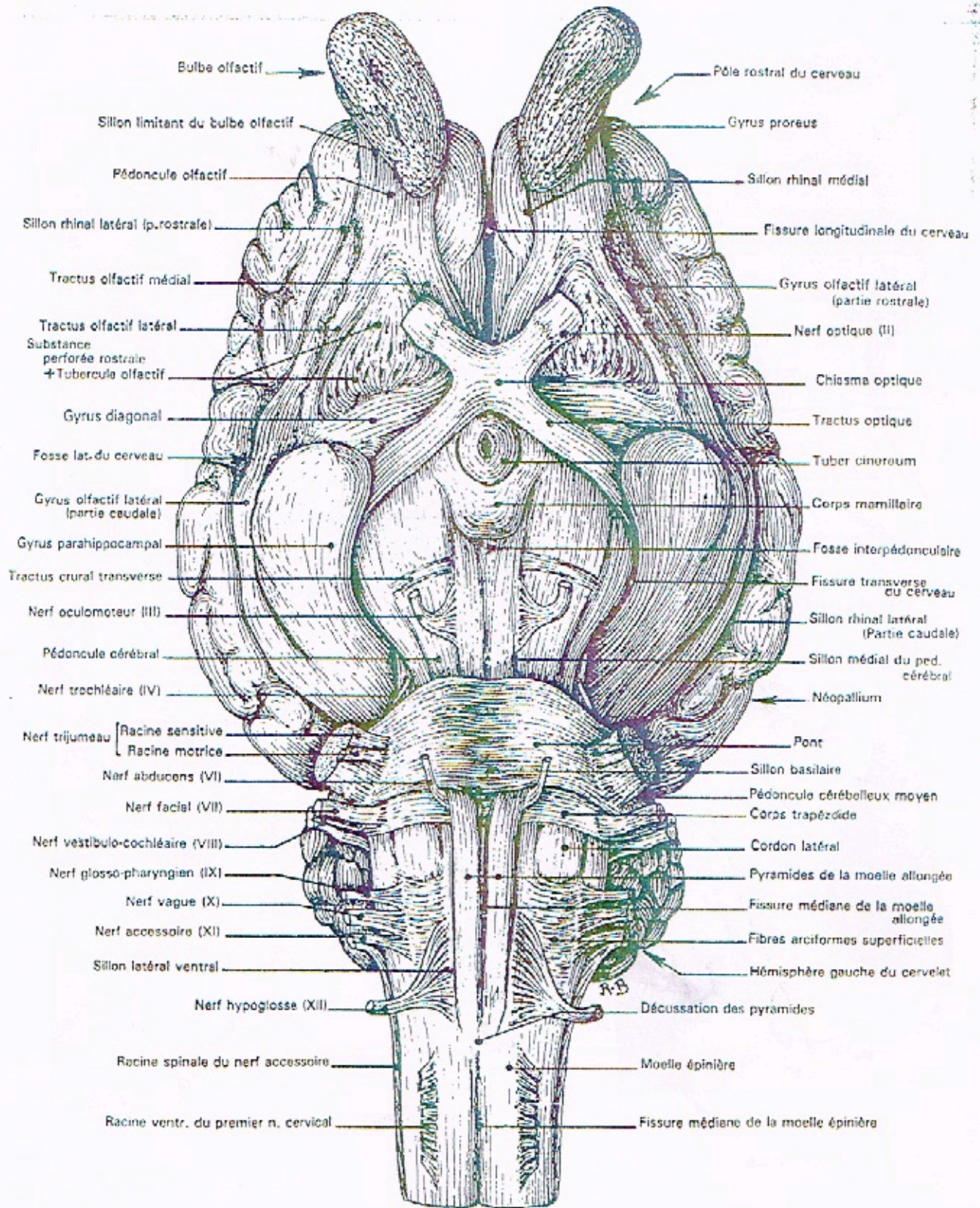


Planche 5 - ENCÉPHALE DE CHEVAL  
(VUE VENTRALE)



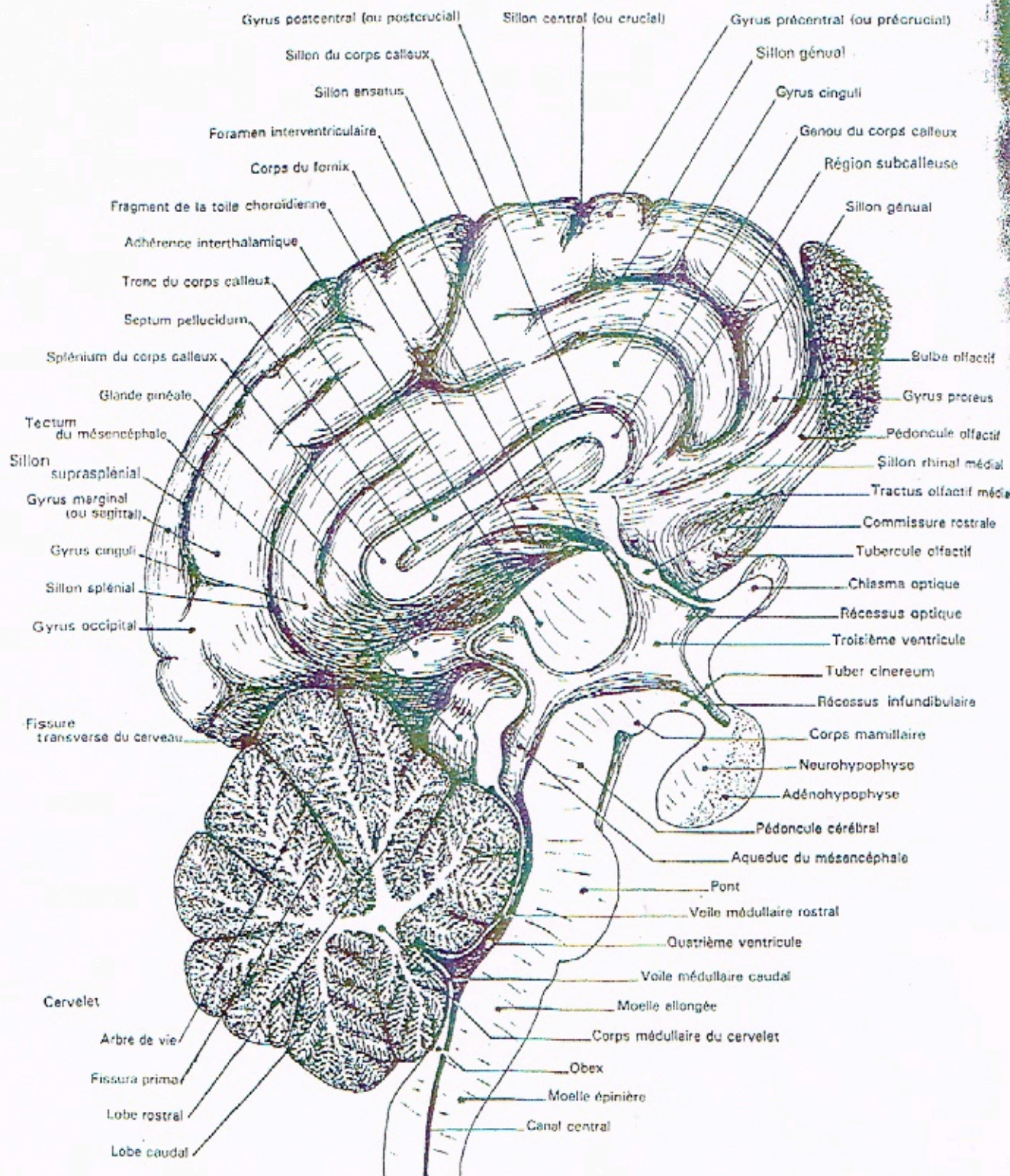
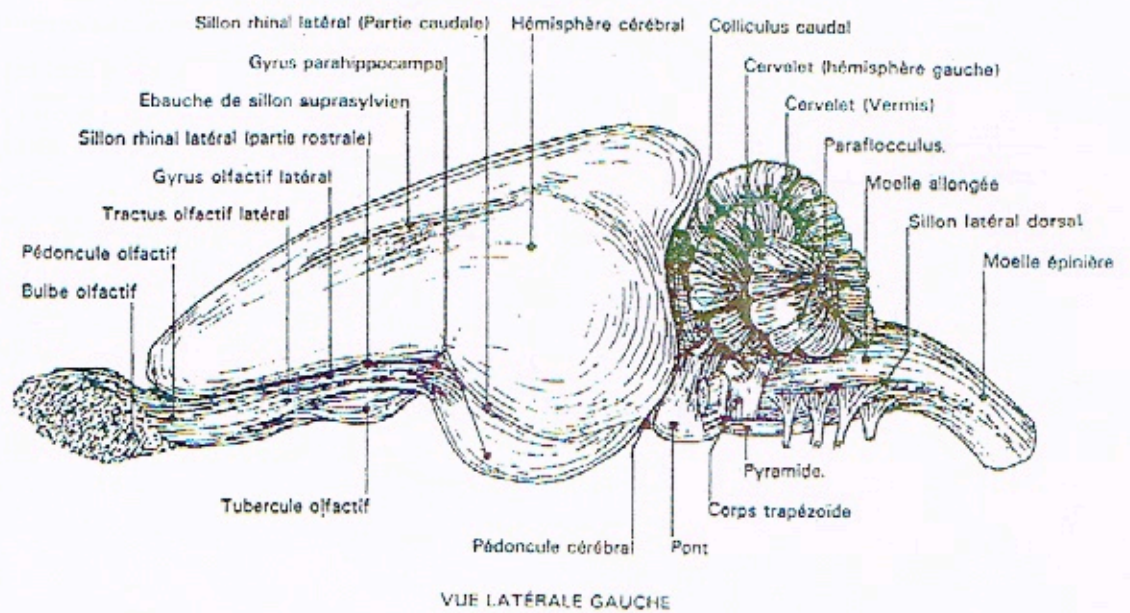
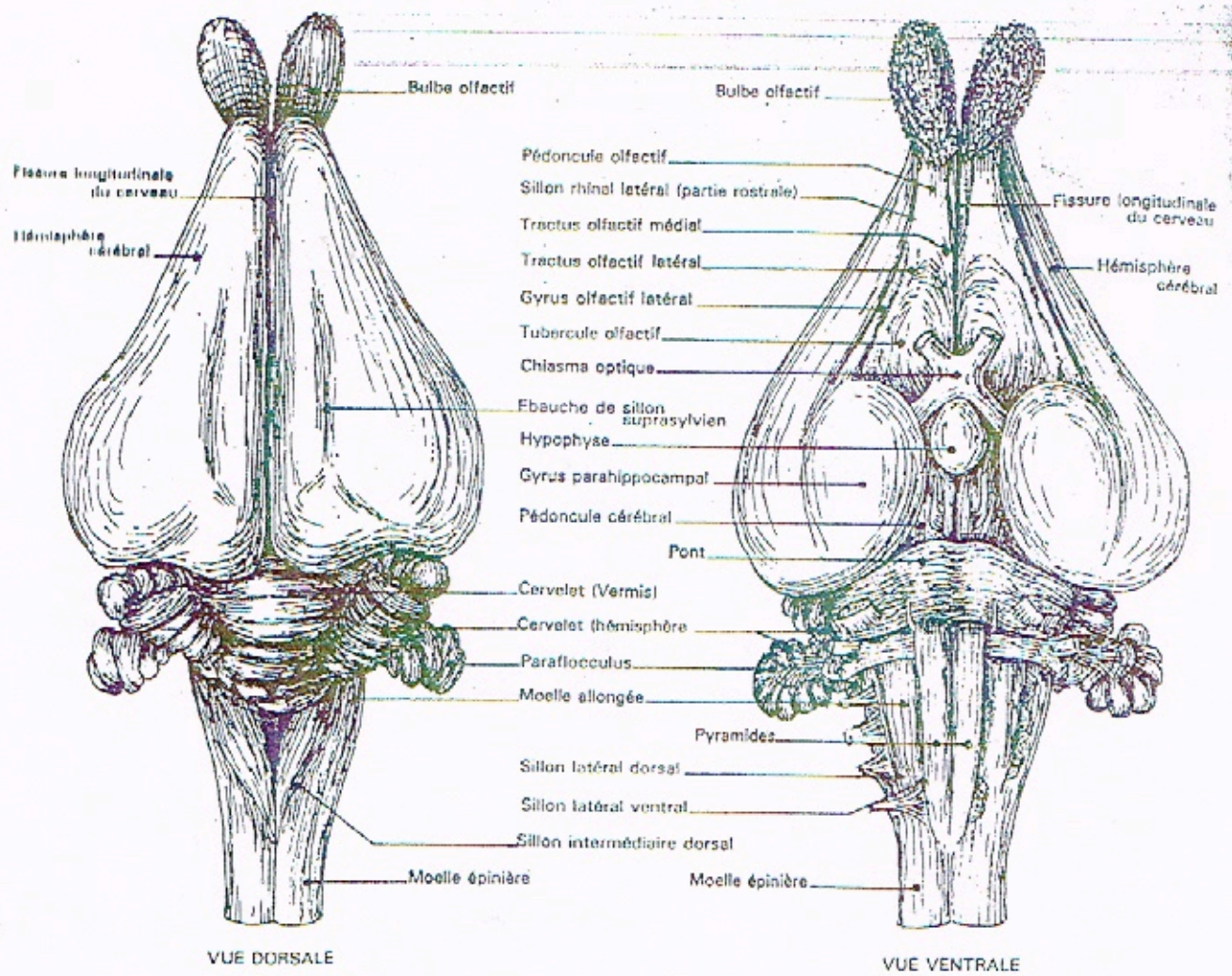


Planche 6 - COUPE MÉDIANE D'UN ENCÉPHALE DE BŒUF  
(MOITIÉ GAUCHE. VUE MÉDIALE)







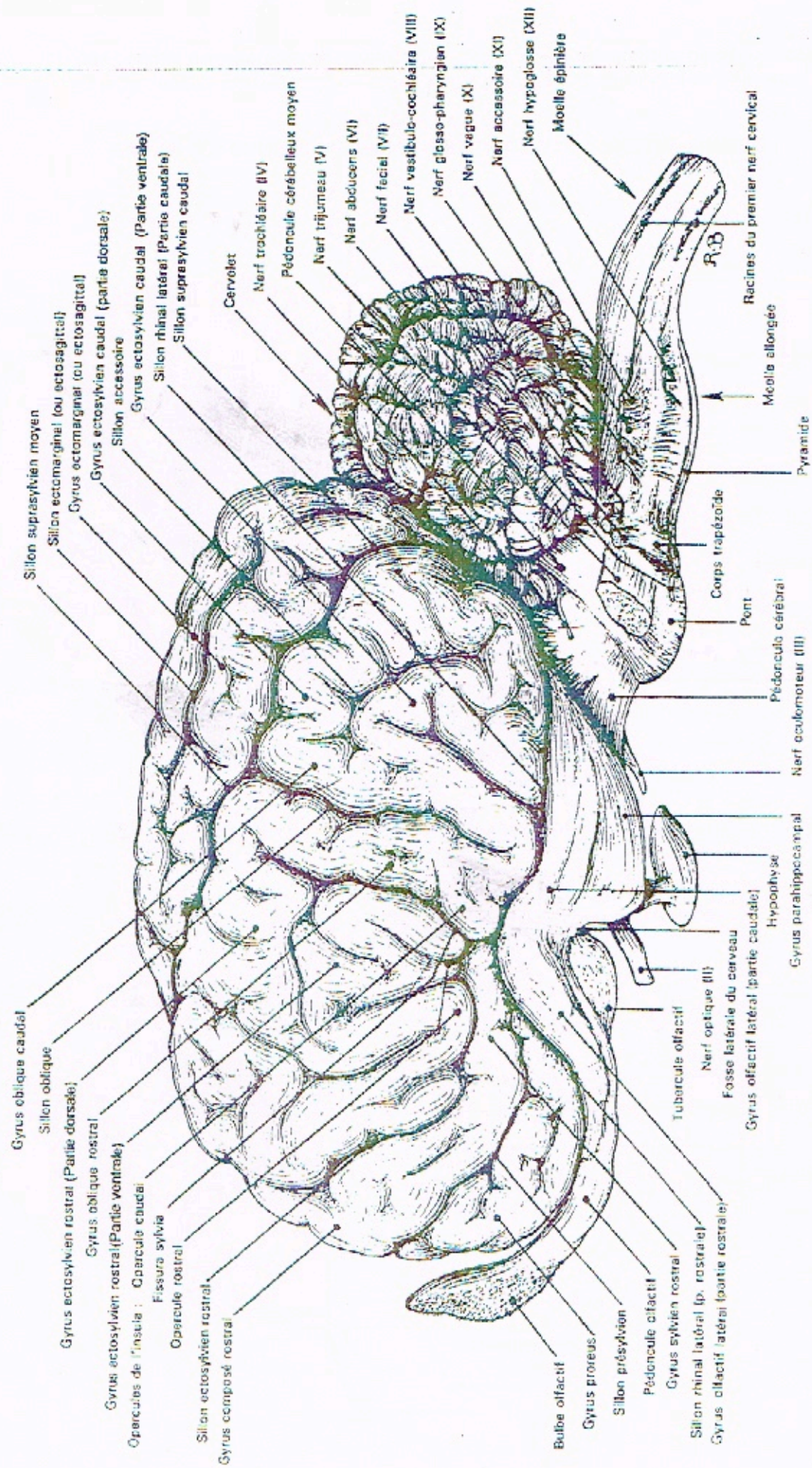


Planche 8 - ENCÉPHALE DE CHEVAL (VUE LATÉRALE GAUCHE)



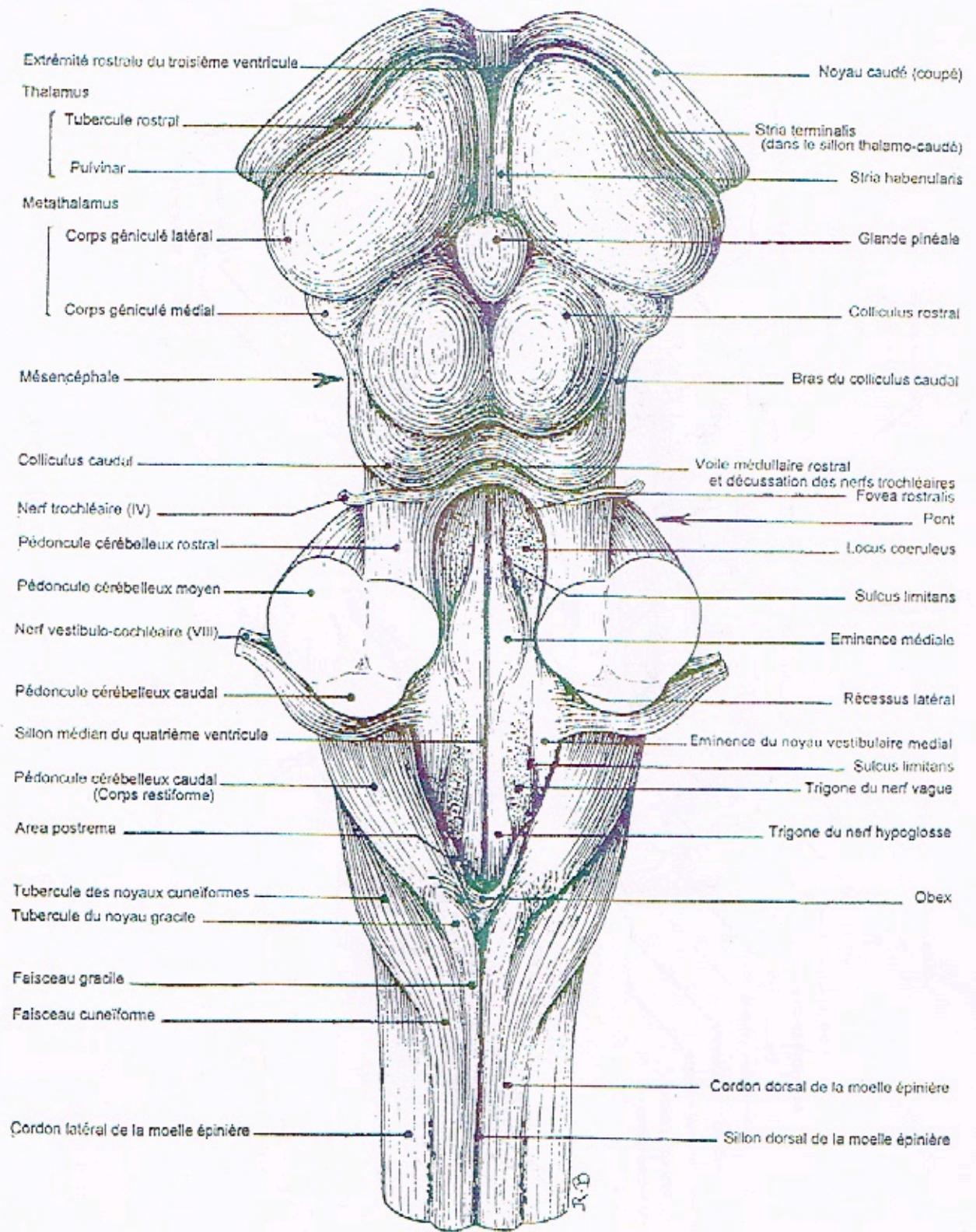


Planche 9 TRONC CÉRÉBRAL DE CHEVAL  
 (VUE DORSALE)



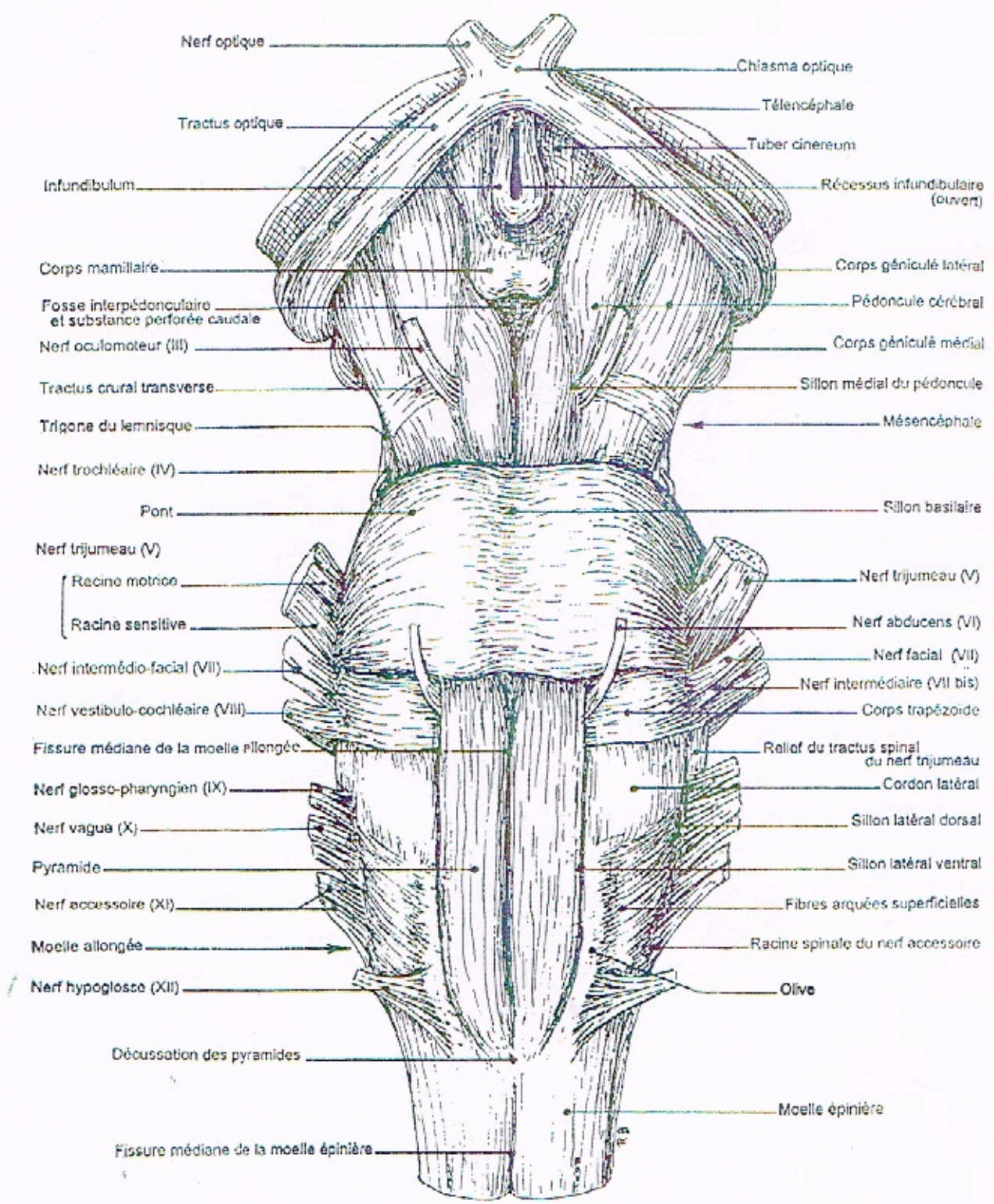
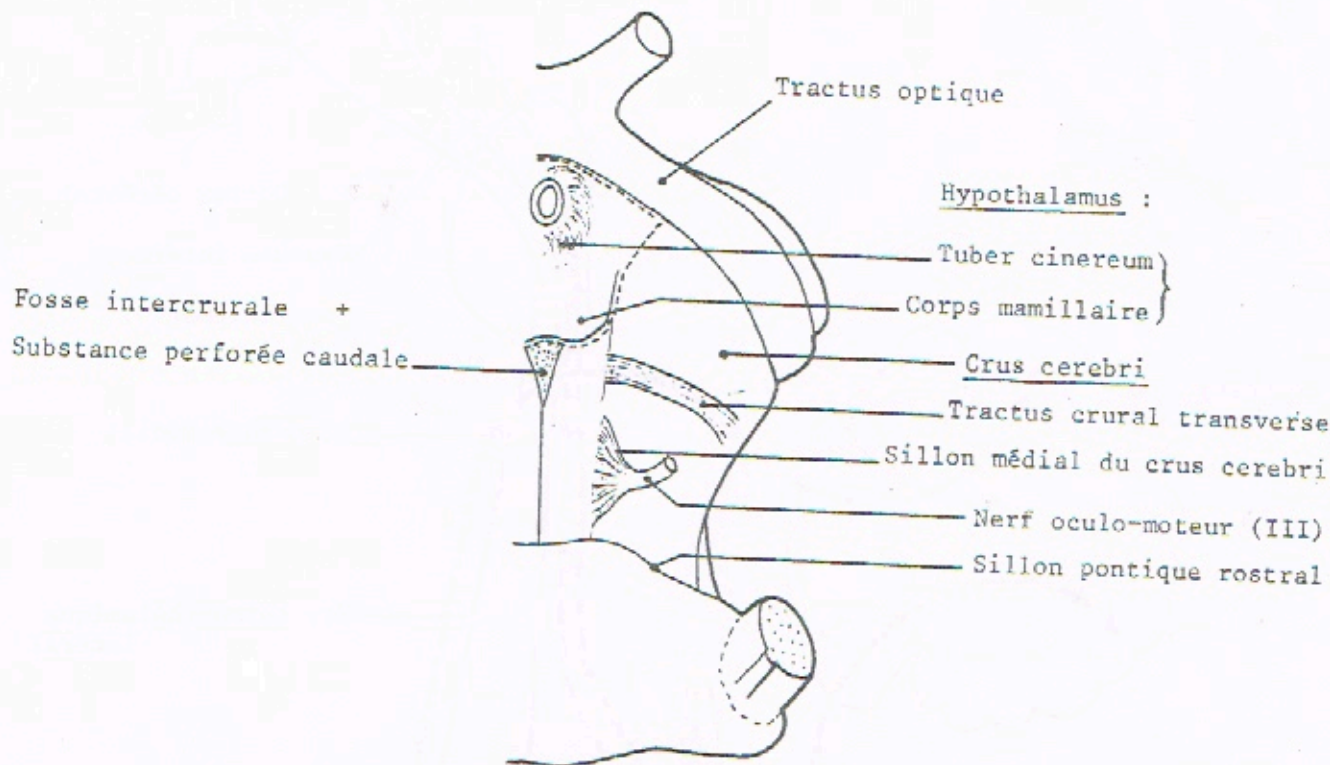


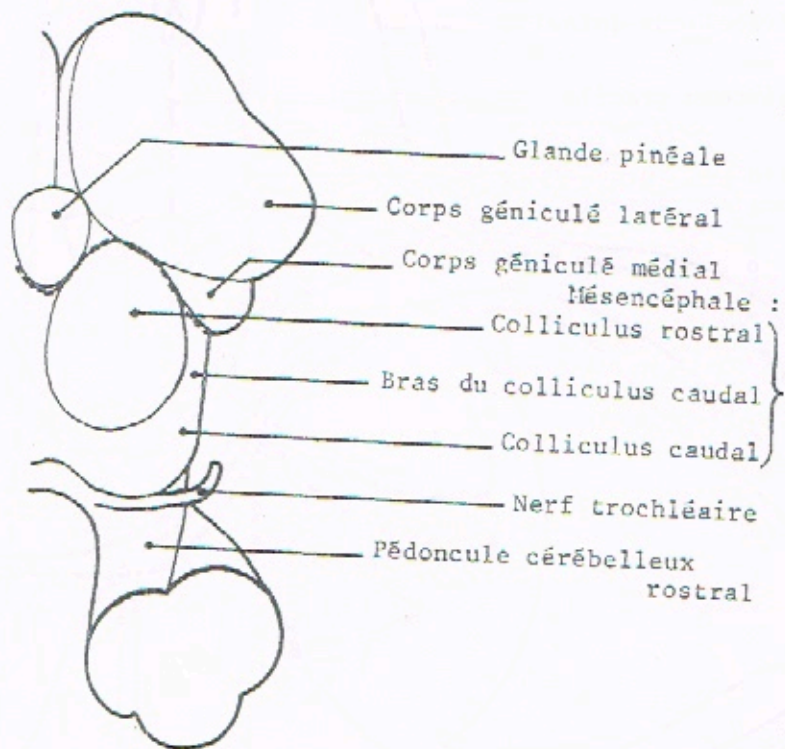
Planche 10 TRONC CEREBRAL DE CHIEN  
 VUE VENTRALE



MESENCEPHALE



VUE VENTRALE



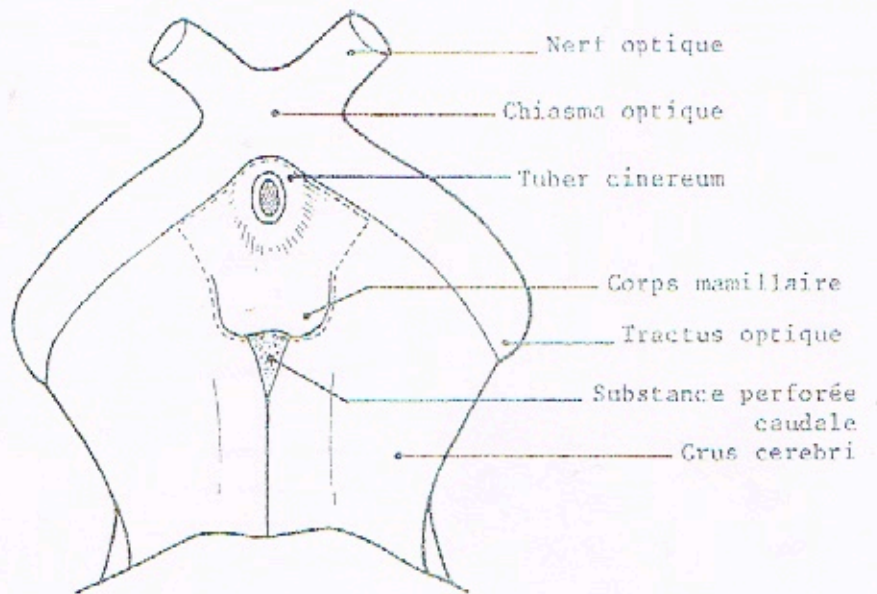
VUE DORSALE



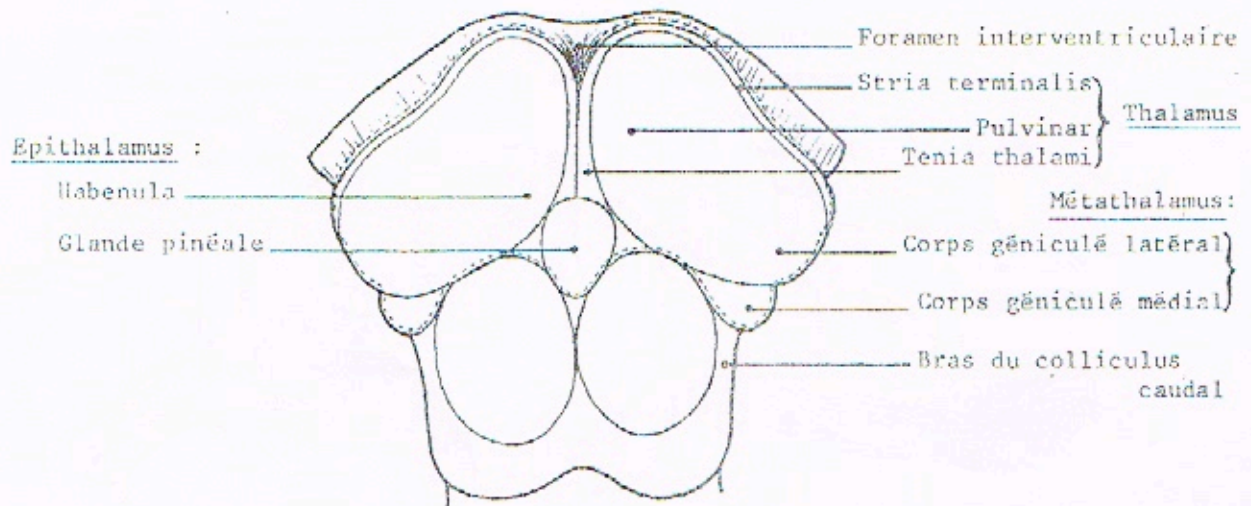




DIENCEPHALE



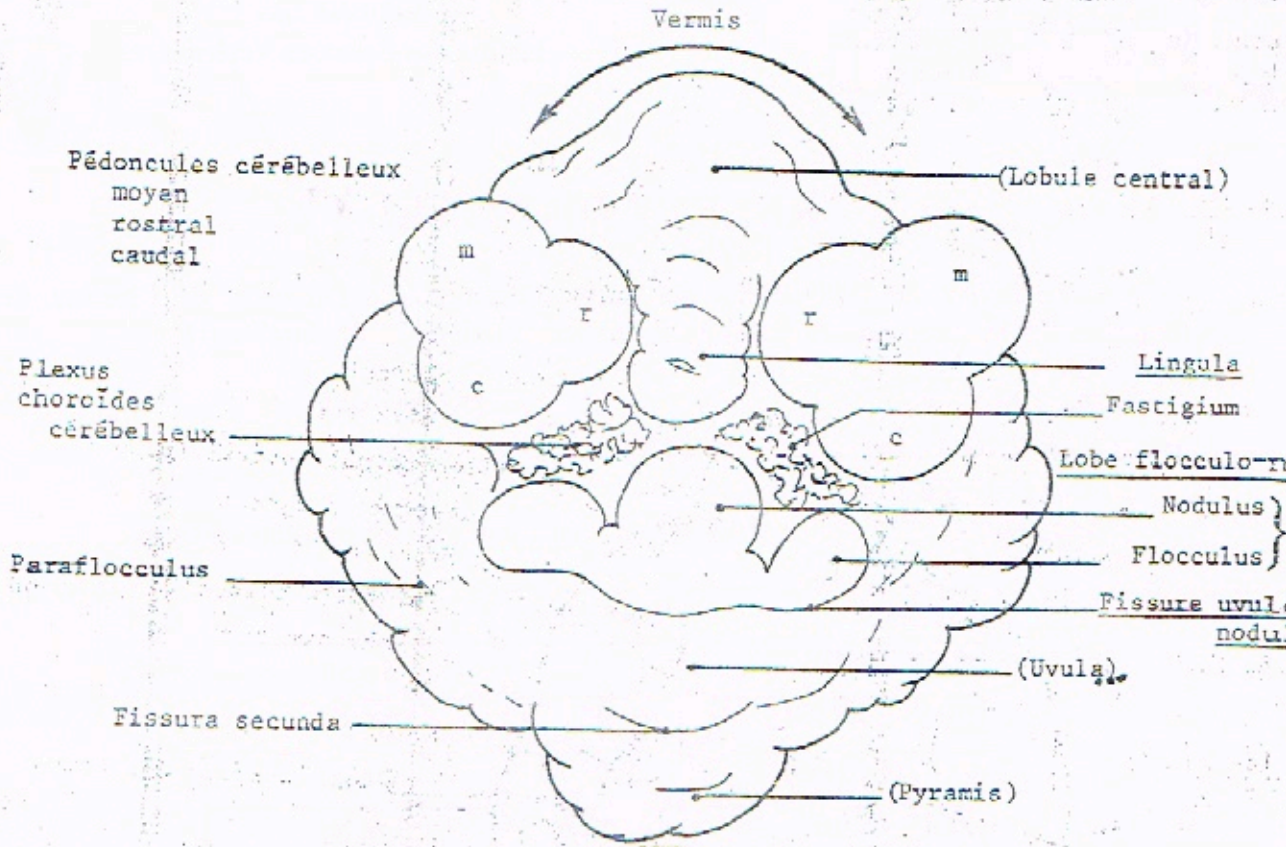
VUE VENTRALE



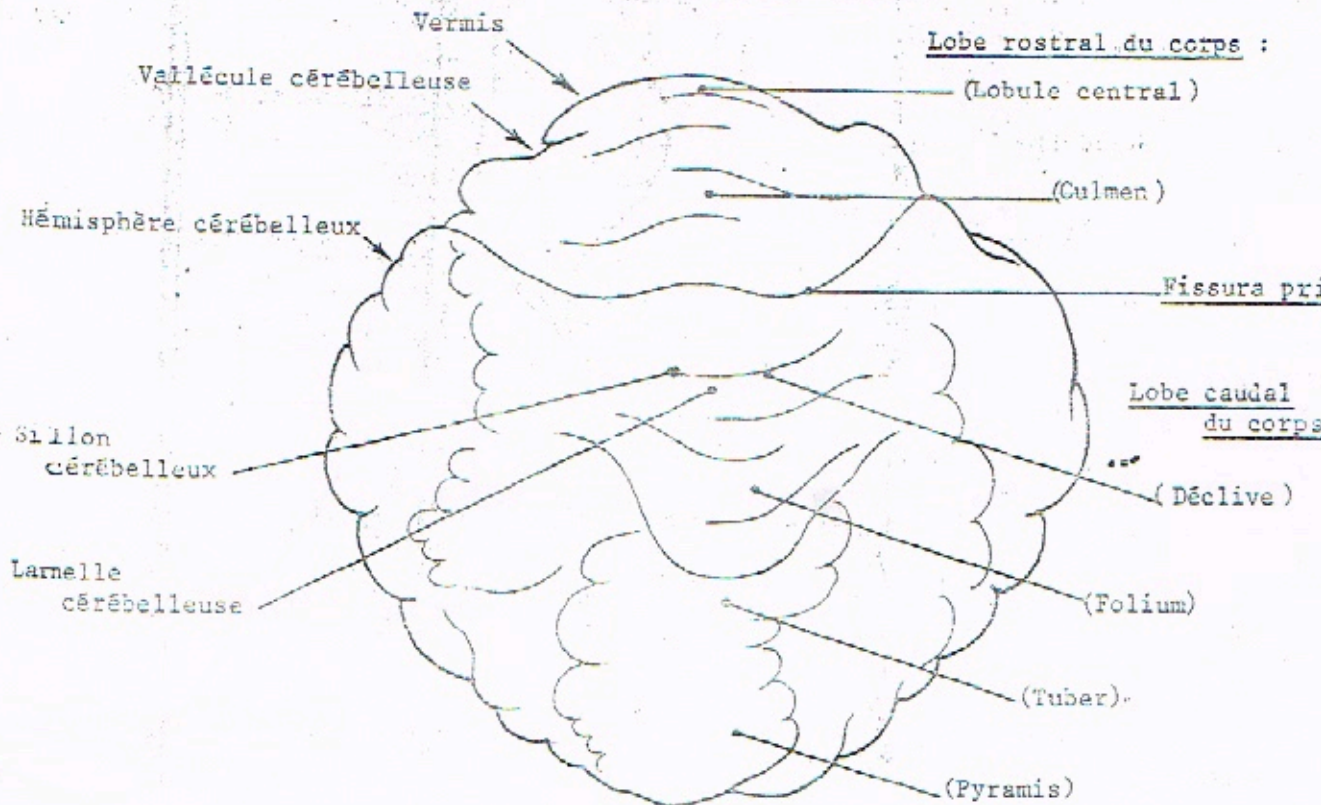
VUE DORSALE



CERVELET

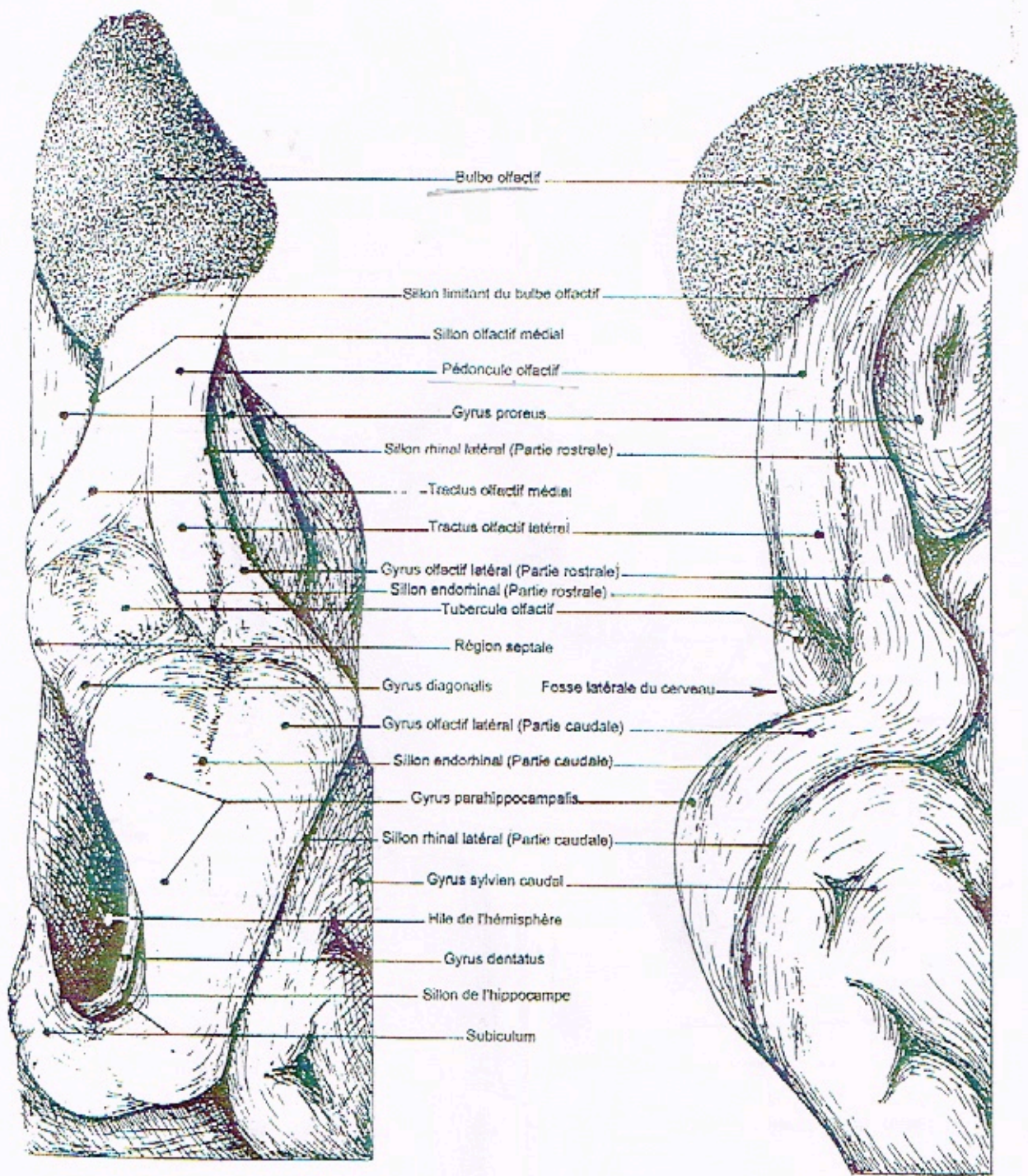


VUE VENTRALE (EQUIDES)



VUE DORSALE (EQUIDES)





VUE VENTRALE

VUE LATÉRALE

Planche 15 - RHINENCÉPHALE DU CHIEN